



— BUREAU OF —  
RECLAMATION

# Water Operations

# Middle Snake Field Office

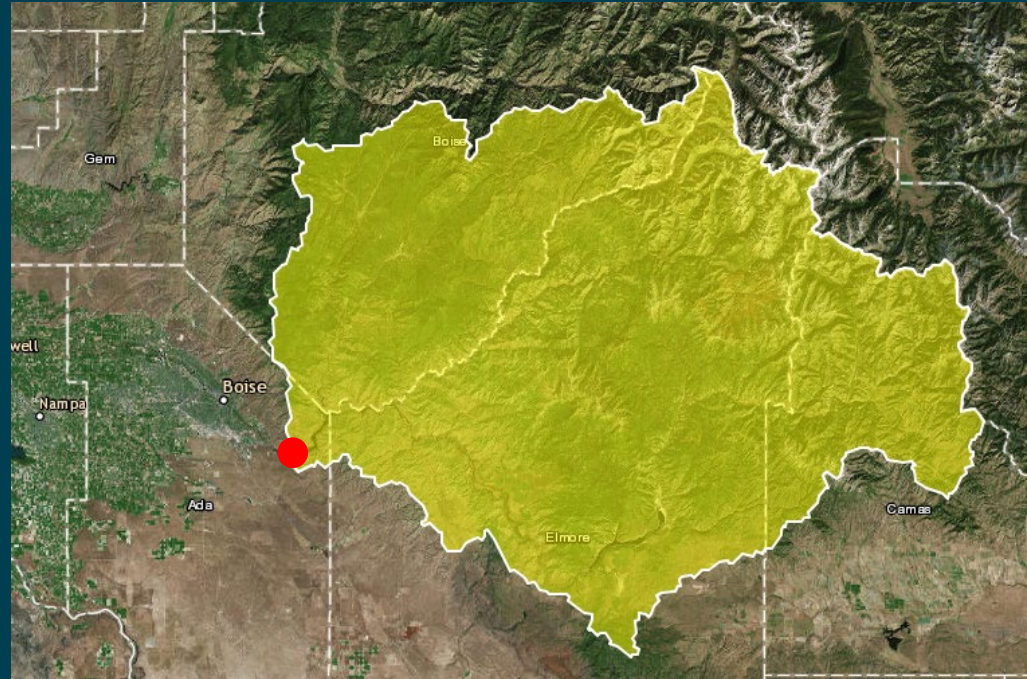
Ryan Hedrick  
Hydrologist

# Boise River abv Lucky Peak Basin Characteristics

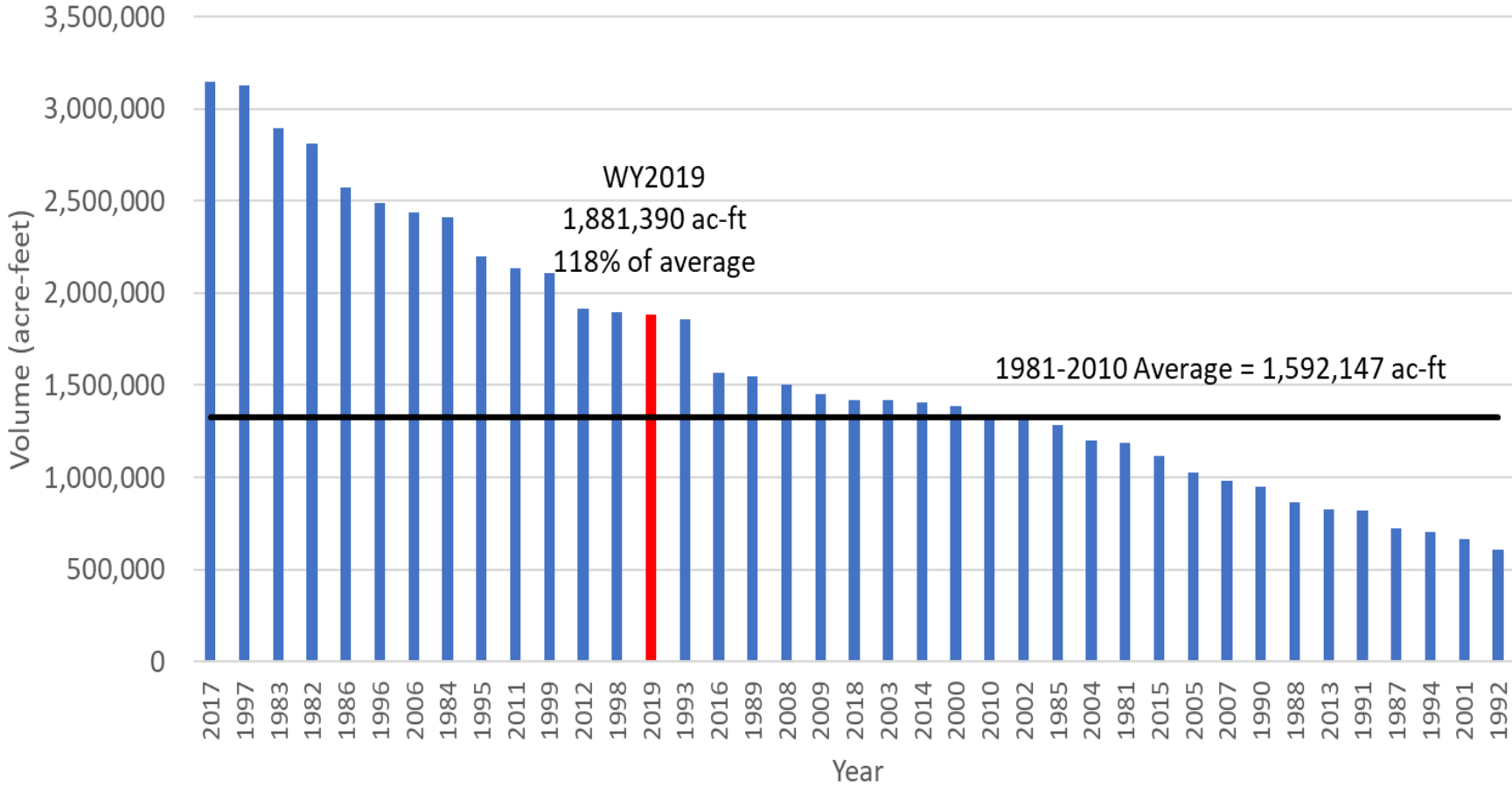
Watershed Area: 2,680 sq. mi.

Watershed Elevation Range:  
3,055 ft to 10,600 feet, mean of  
5,990 ft

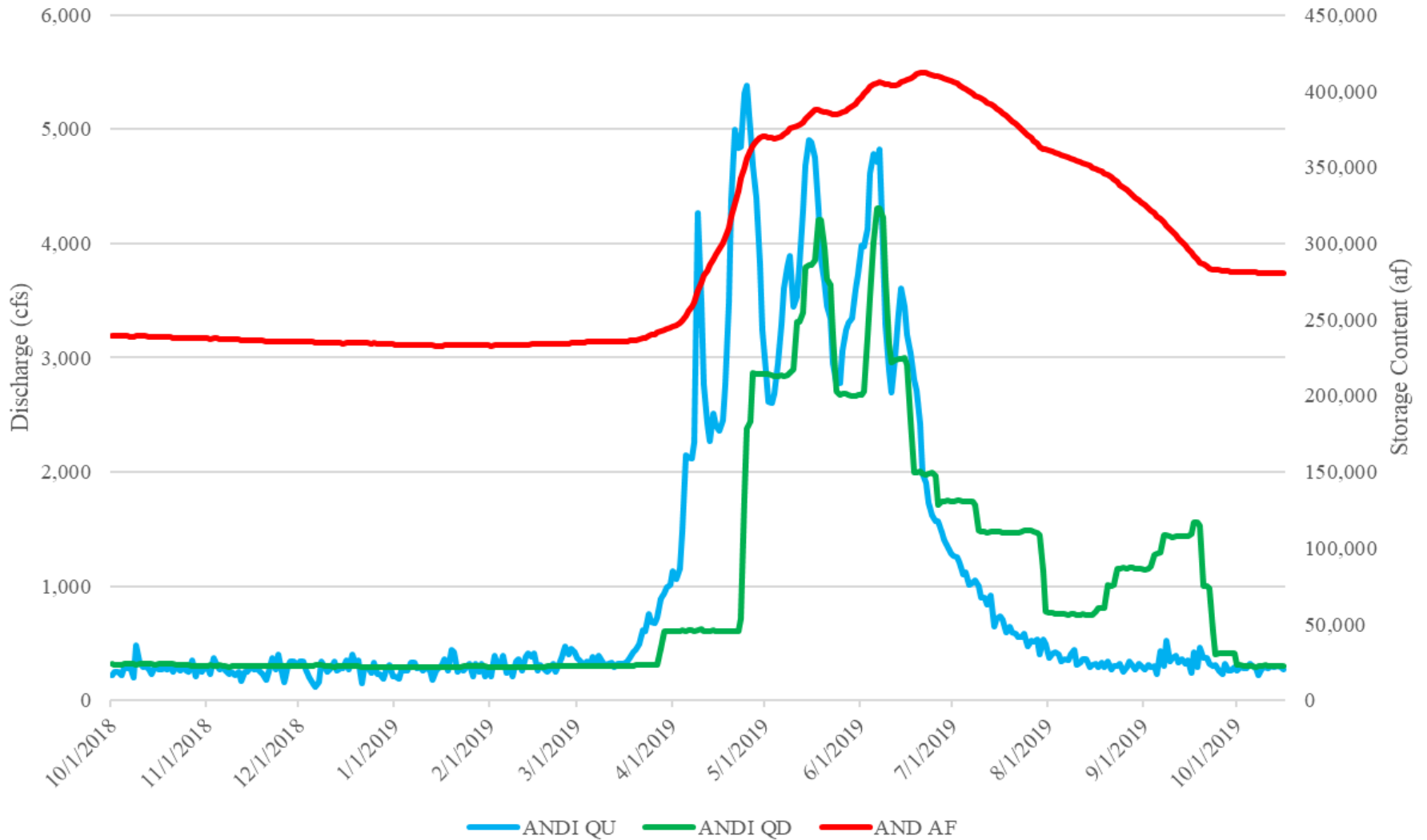
Annual Peak Flows (1900-2019):  
Ranges from 3,020 cfs to 25,040  
cfs, 2019 peaked at 17,392 cfs on  
April 9<sup>th</sup>



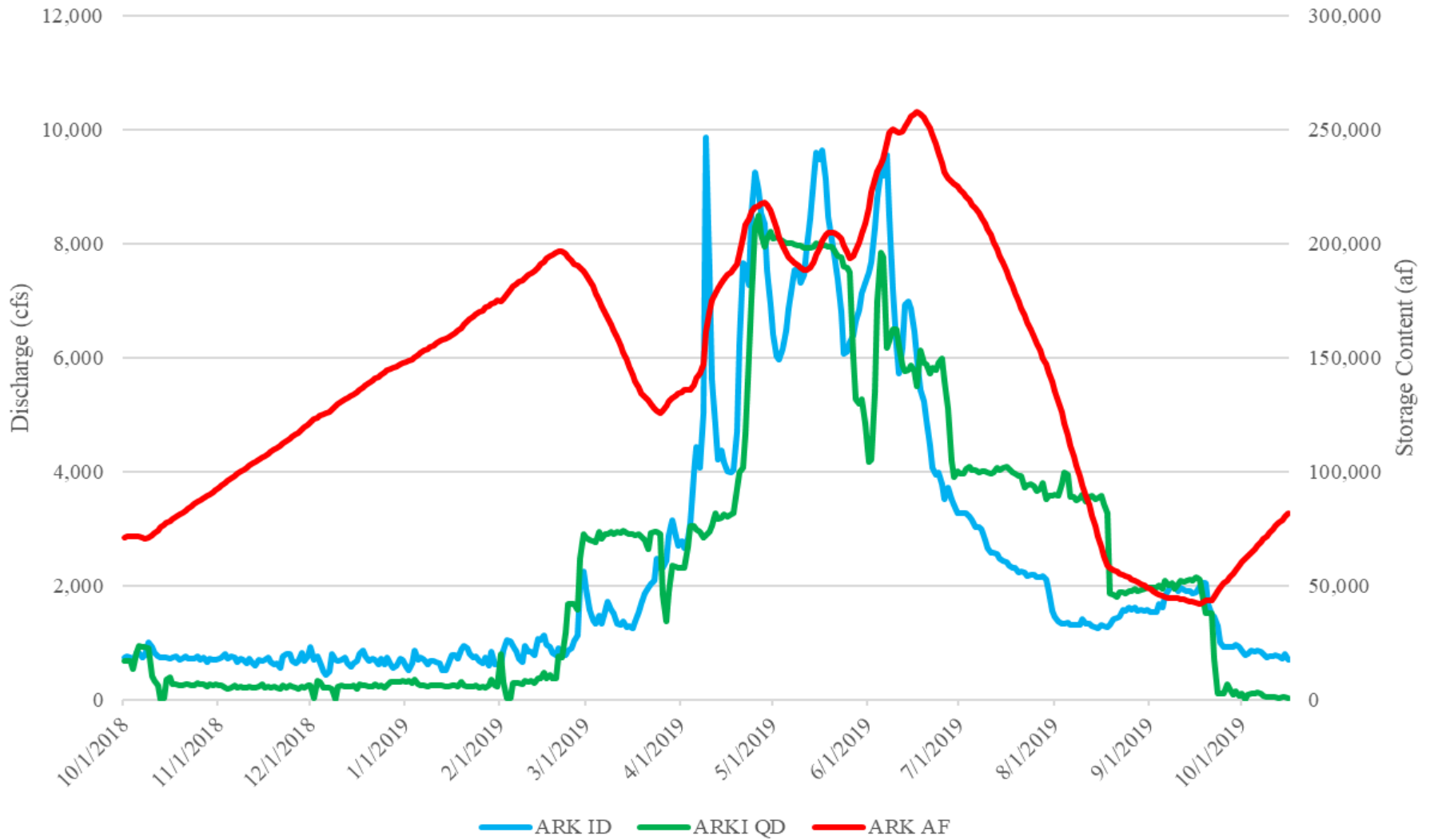
Boise Reservoir System Inflow  
WY1981 to WY2019  
Jan 1 - July 31



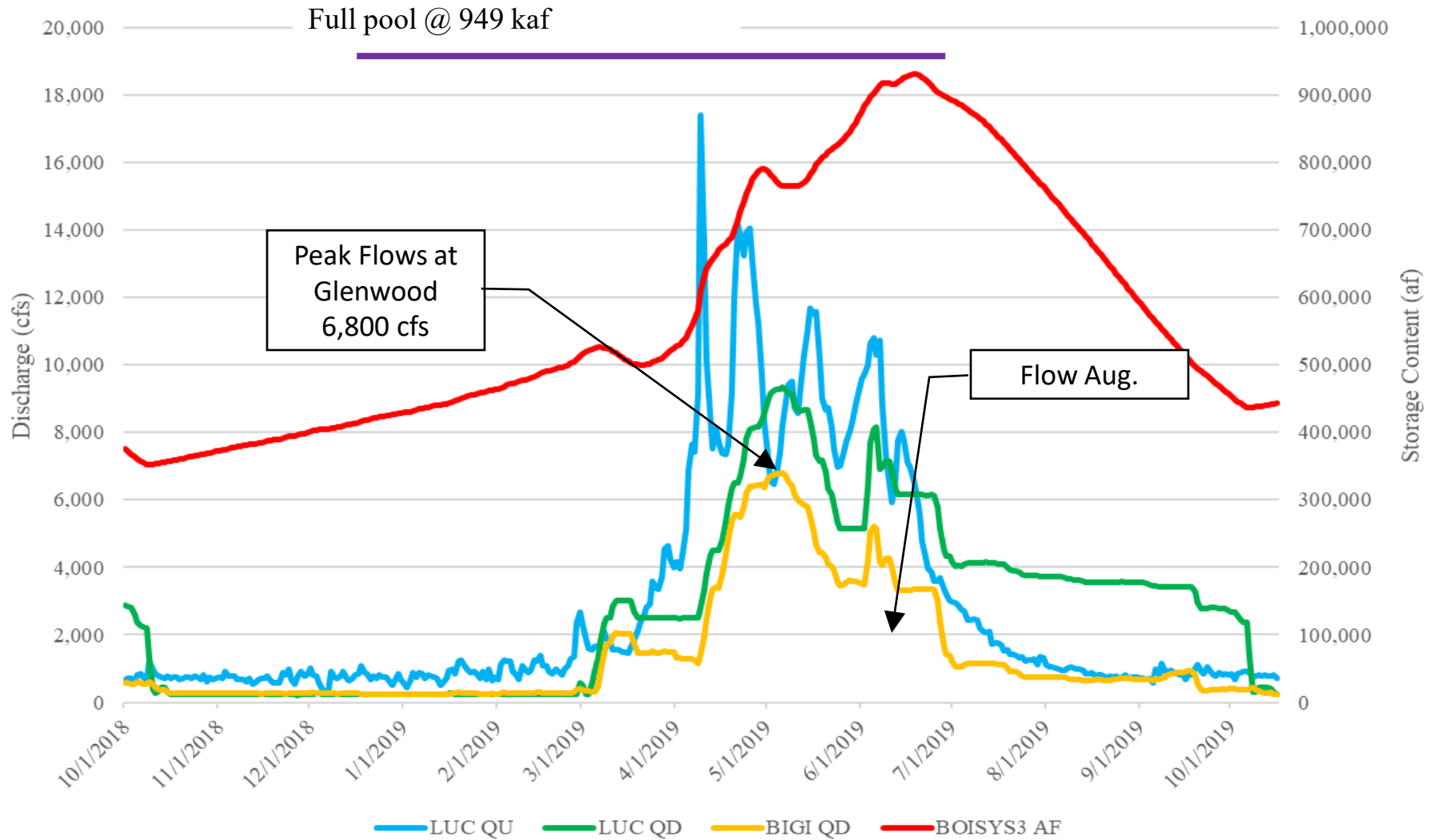
# Anderson Ranch Operations



# Arrowrock Operations

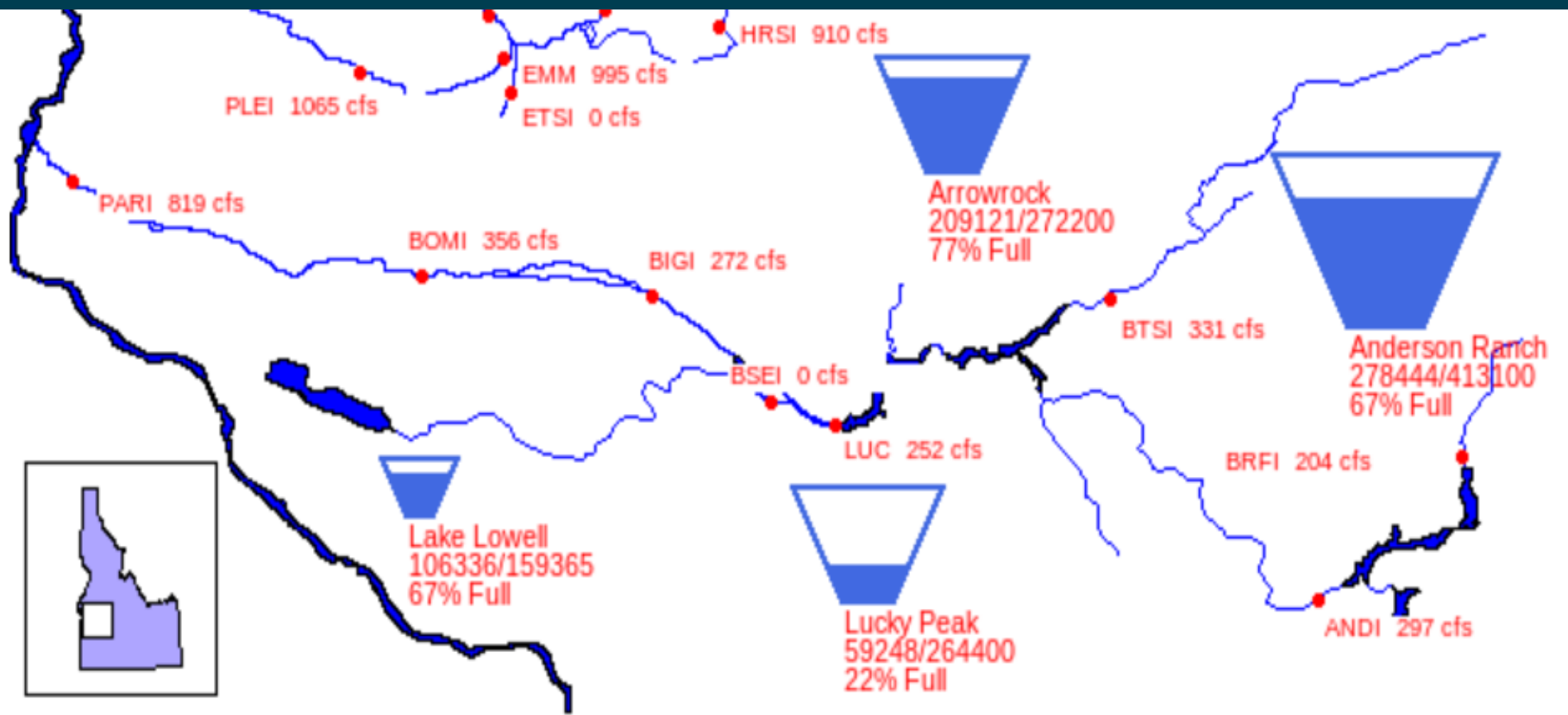


# Boise System Operations



# WY2020 Current Conditions





**Boise River system (Anderson Ranch, Arrowrock, Lucky Peak) is at 58 % of capacity.**

Total space available: 402887 AF

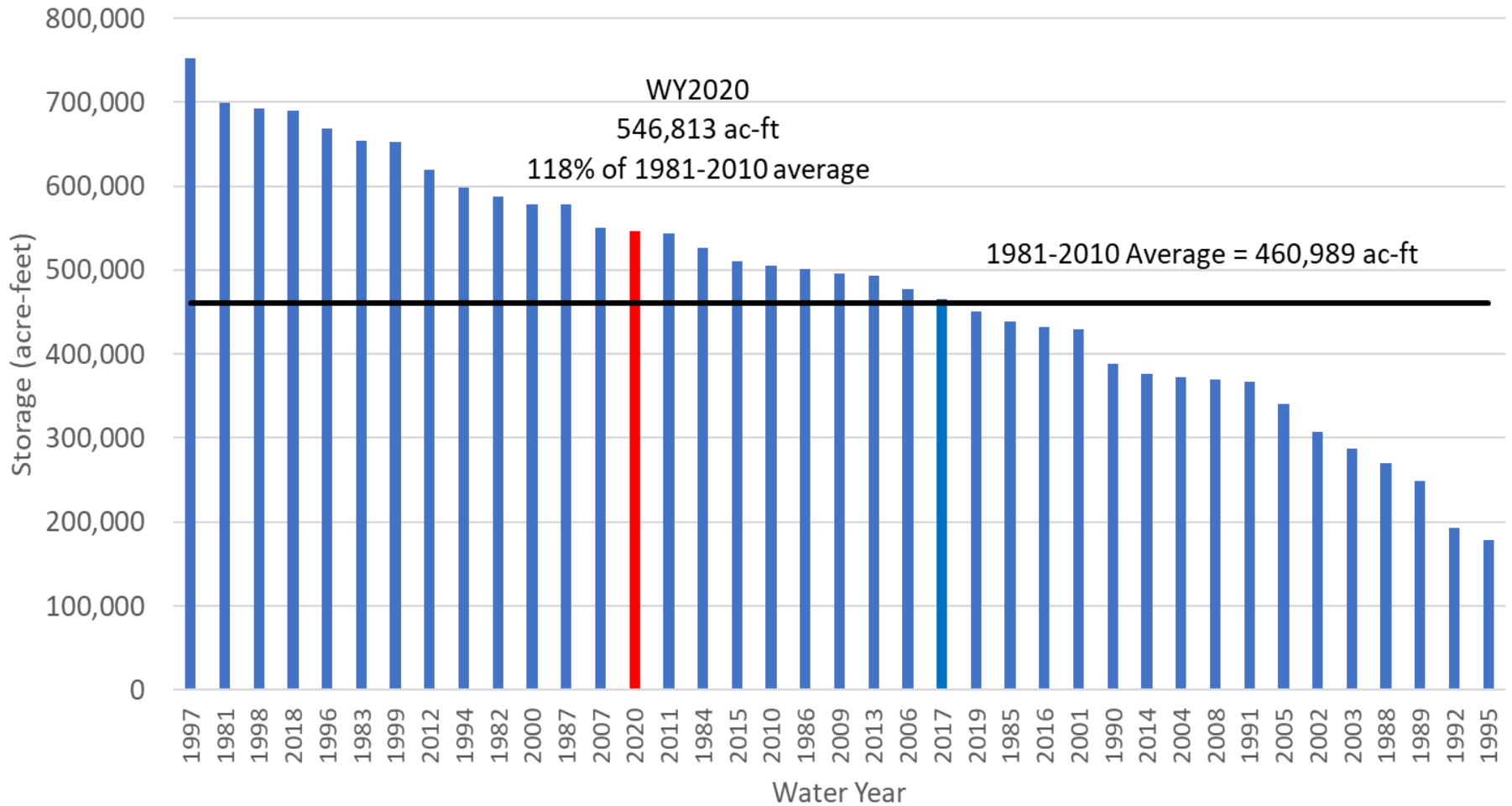
Total storage capacity: 949700 AF

Natural Flow: 856 CFS





# Boise Reservoir System January 20 Contents WY1981 to WY2020



**CURRENT MONTHLY FORECAST SUMMARY**  
**JAN 1, 2020**

FORECAST POINT	FORECAST PERIOD	1981-2010 AVERAGE (KAF)	NORMAL SUBSEQUENT CONDITIONS	
			FORECAST (KAF)	PERCENT NORMAL
* ANDERSON	JAN-JUL	561	408	73%
BAKER	JAN-JUL	77	49	64%
BEULAH	JAN-JUN	86	66	76%
*** BOISE	JAN-JUL	1592	1150	72%
** BULLY CREEK	JAN-JUN	38	24	63%
* CASCADE	JAN-JUL	593	468	79%
* DEADWOOD	JAN-JUL	140	106	76%
* HORSESHOE BEND	JAN-JUL	1849	1442	78%
** MANN CREEK	JAN-JUN	28	21	75%
** MALHEUR NR DREWSEY	JAN-JUN	126	88	69%
** N.F. MALHEUR	JAN-JUN	77	55	71%
OWYHEE	JAN-JUN	655	499	76%
OWYHEE NR ROME	JAN-JUN	596	466	78%
WARM SPRINGS	JAN-JUN	137	101	73%
WILDHORSE	JAN-JUN	32	30	94%
UNITY	JAN-JUL	55	32	58%

\* PCA Forecast

\*\* PCA & MLR Average

\*\*\* Coordinated with USACE

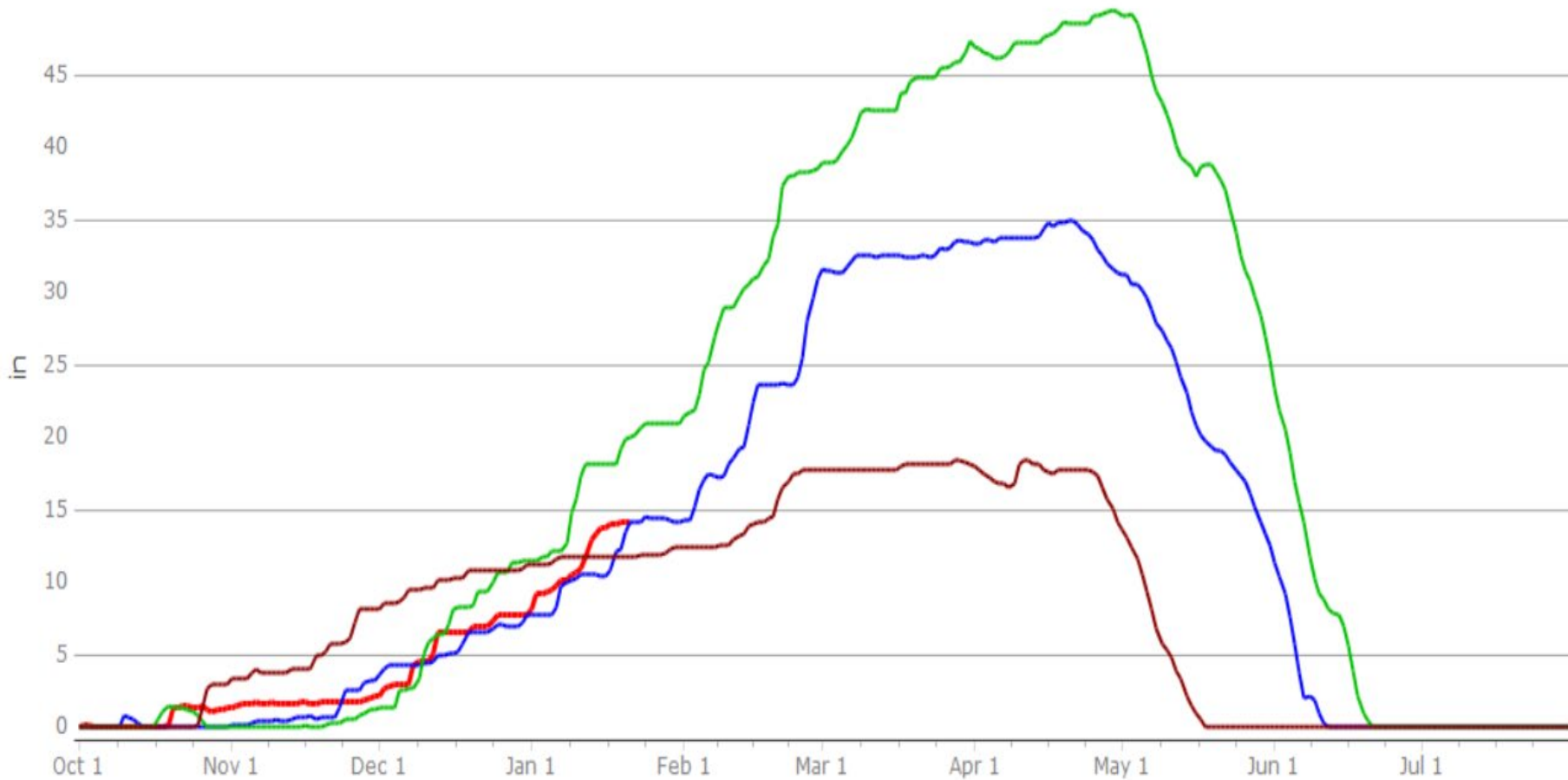
\*\*\*\* RFC



2017-04-26 49.1

# ATLANTA SUMMIT Elevation:7580.000

— 2020 — 2019 — 2017 — 1992

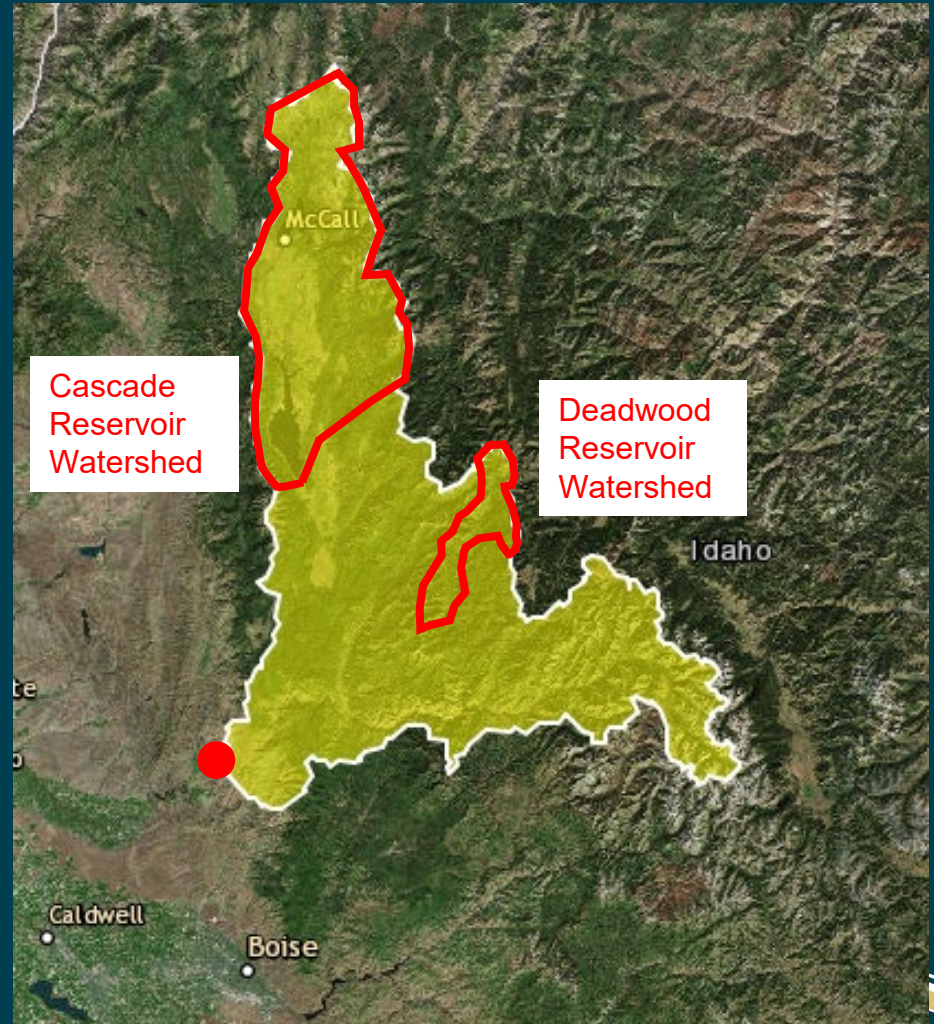


# Payette Characteristics

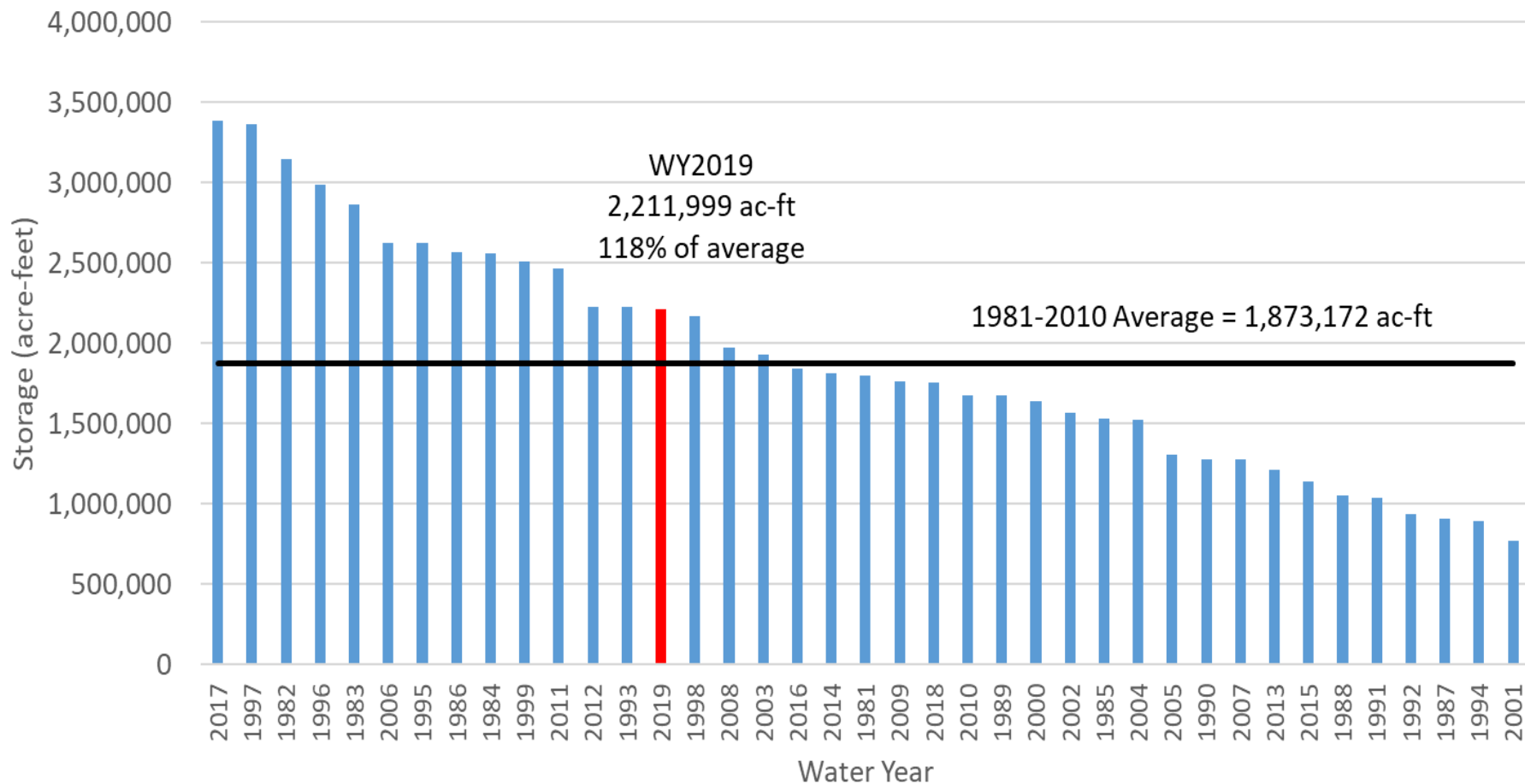
Watershed Area: 2,230 sq. mi.

Watershed Elevation Range:  
2,300 ft to 10,700 ft, average  
of 5,800 ft

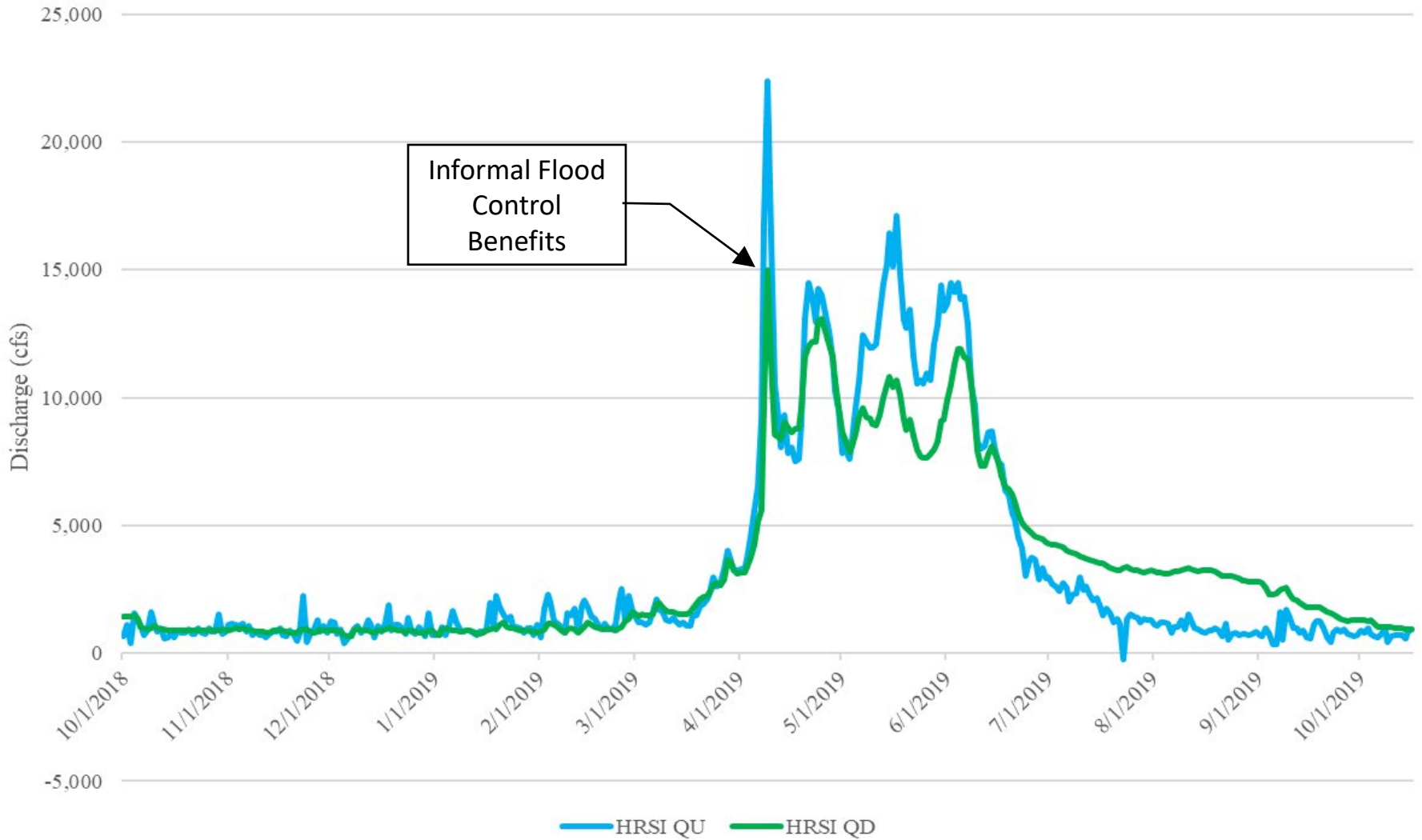
Annual Peak Flows (1920-  
2019): Ranges from 3560 cfs  
to 29,200 cfs, 2019 peaked at  
22,362 cfs on April 9th



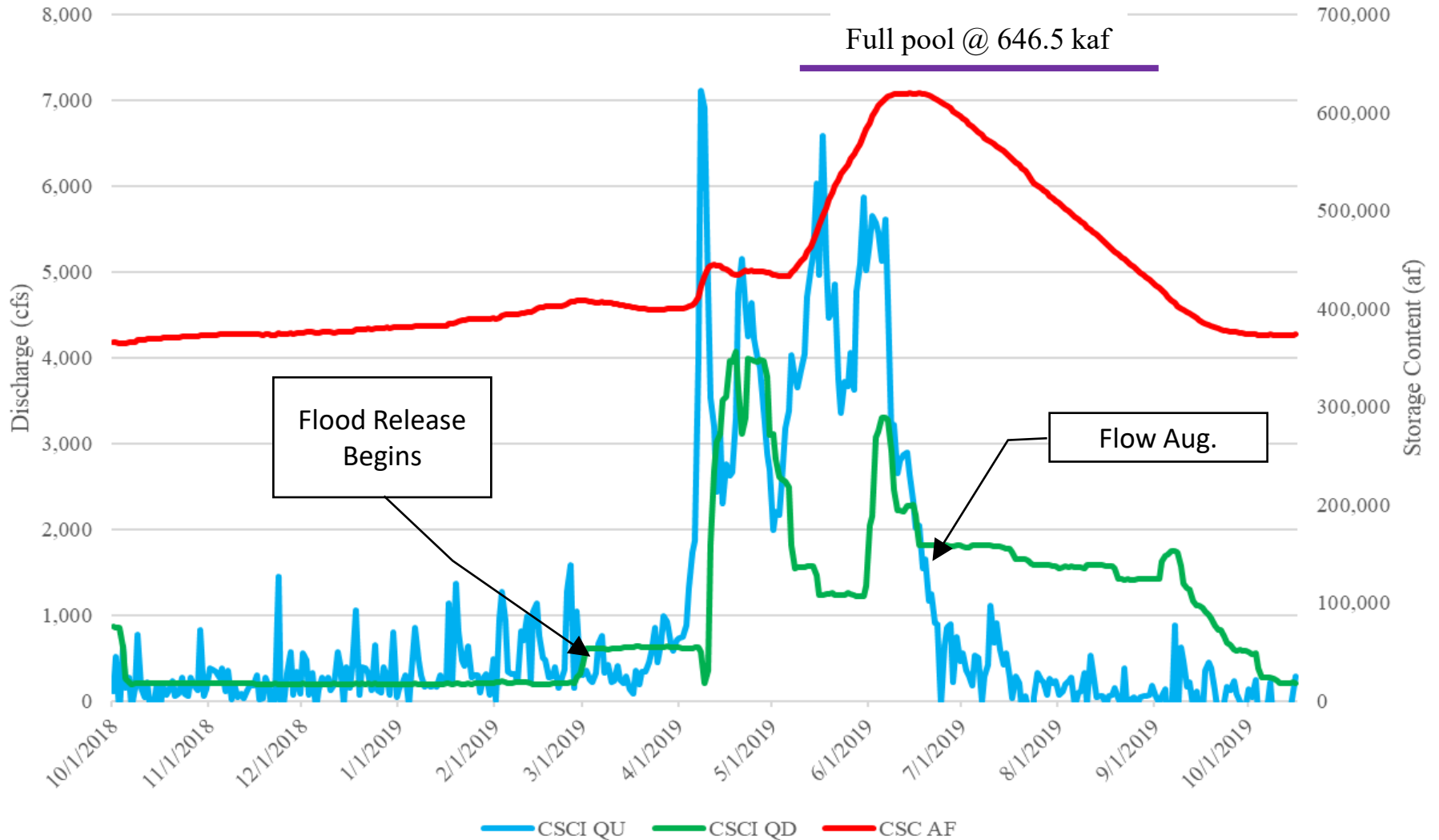
Payette System Inflow  
WY1981 to WY2019  
Jan 1 - Jul 31



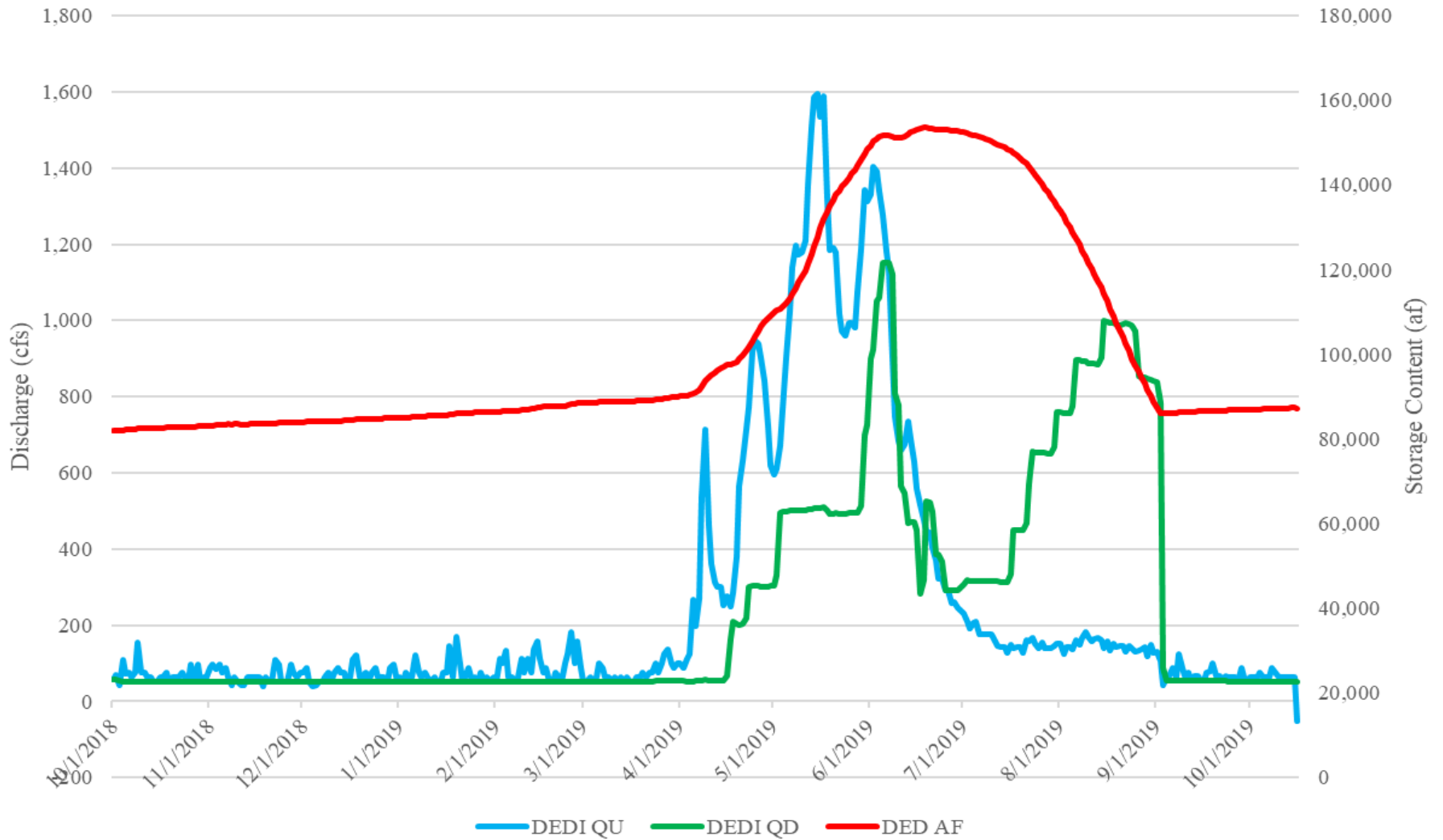
# Payette R. at Horseshoe Bend



# Cascade Reservoir Operations



# Deadwood Reservoir Operations

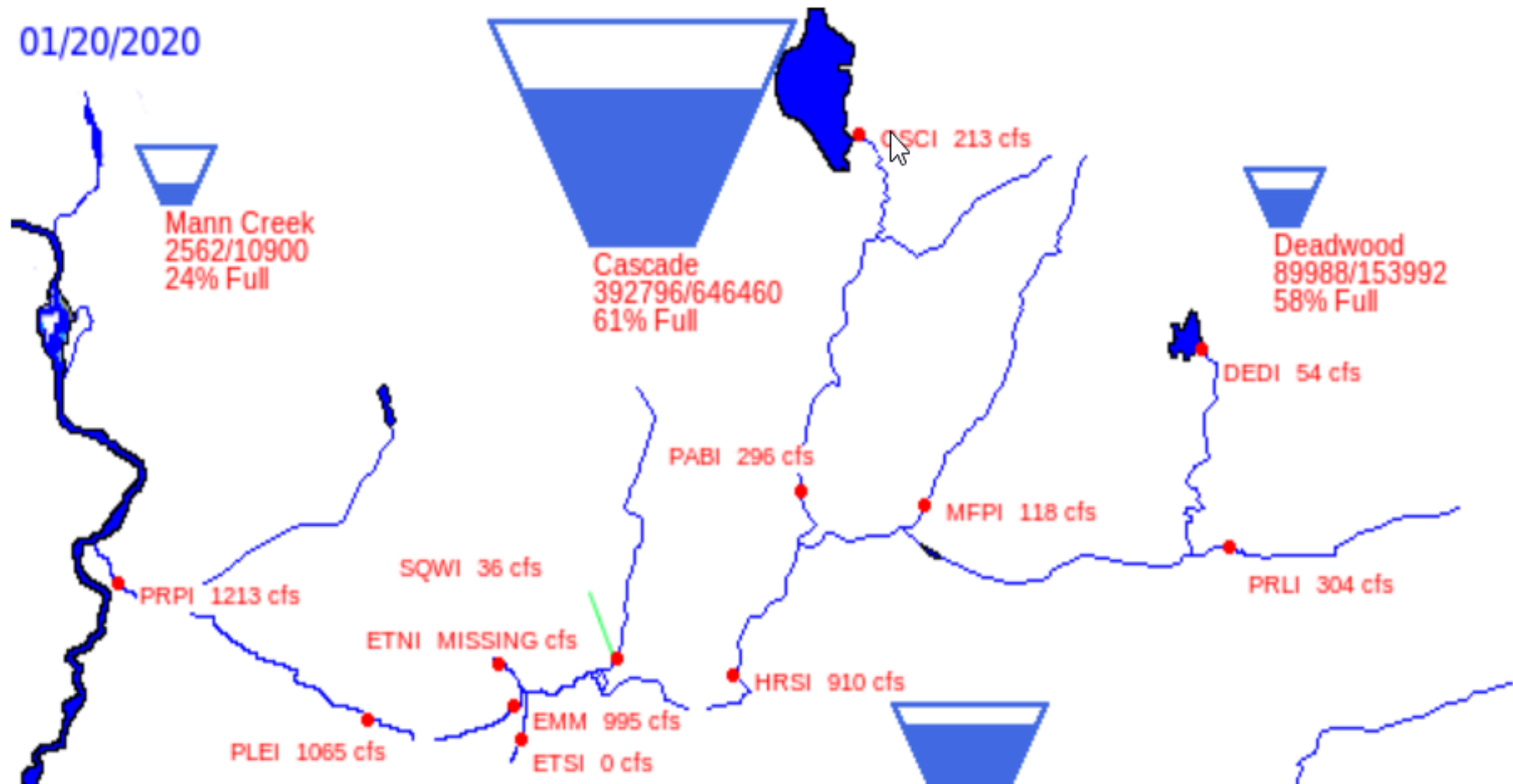




# WY2020 Current Conditions



01/20/2020



Payette River system (Cascade, Deadwood) is at **60 %** of capacity.

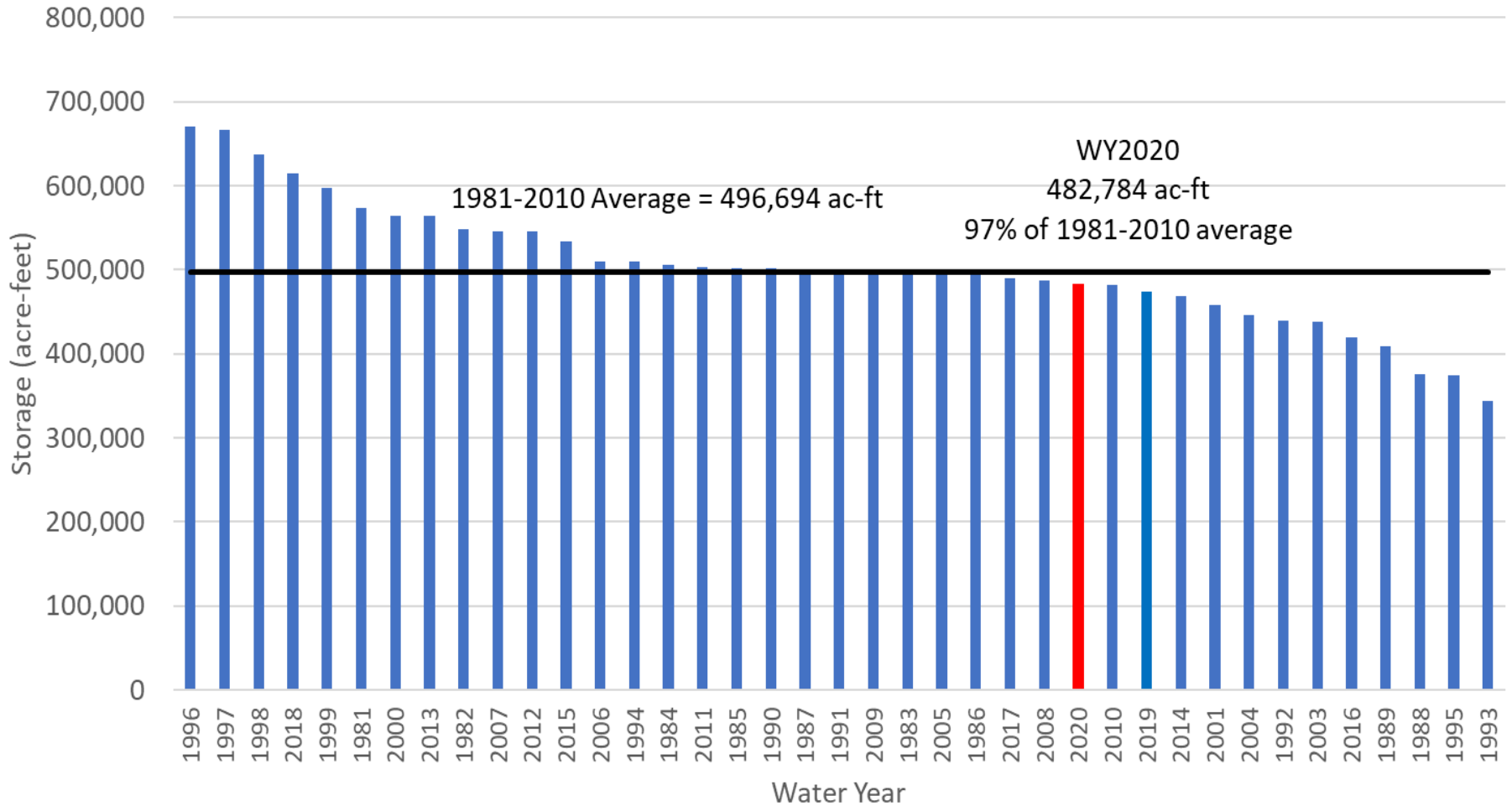
Total space available: 317668 AF

Total storage capacity: 800452 AF

Natural Flow: 1141 CFS



# Payette Reservoir System January 20 Contents WY1981 to WY2020



**CURRENT MONTHLY FORECAST SUMMARY**

**JAN 1, 2020**

FORECAST POINT	FORECAST PERIOD	1981-2010 AVERAGE (KAF)	NORMAL SUBSEQUENT CONDITIONS	
			FORECAST (KAF)	PERCENT NORMAL
* ANDERSON	JAN-JUL	561	408	73%
BAKER	JAN-JUL	77	49	64%
BEULAH	JAN-JUN	86	66	76%
*** BOISE	JAN-JUL	1592	1150	72%
** BULLY CREEK	JAN-JUN	38	24	63%
* CASCADE	JAN-JUL	593	468	79%
* DEADWOOD	JAN-JUL	140	106	76%
* HORSESHOE BEND	JAN-JUL	1849	1442	78%
** MANN CREEK	JAN-JUN	28	21	75%
** MALHEUR NR DREWSEY	JAN-JUN	126	88	69%
** N.F. MALHEUR	JAN-JUN	77	55	71%
OWYHEE	JAN-JUN	655	499	76%
OWYHEE NR ROME	JAN-JUN	596	466	78%
WARM SPRINGS	JAN-JUN	137	101	73%
WILDHORSE	JAN-JUN	32	30	94%
UNITY	JAN-JUL	55	32	58%

\* PCA Forecast

\*\* PCA & MLR Average

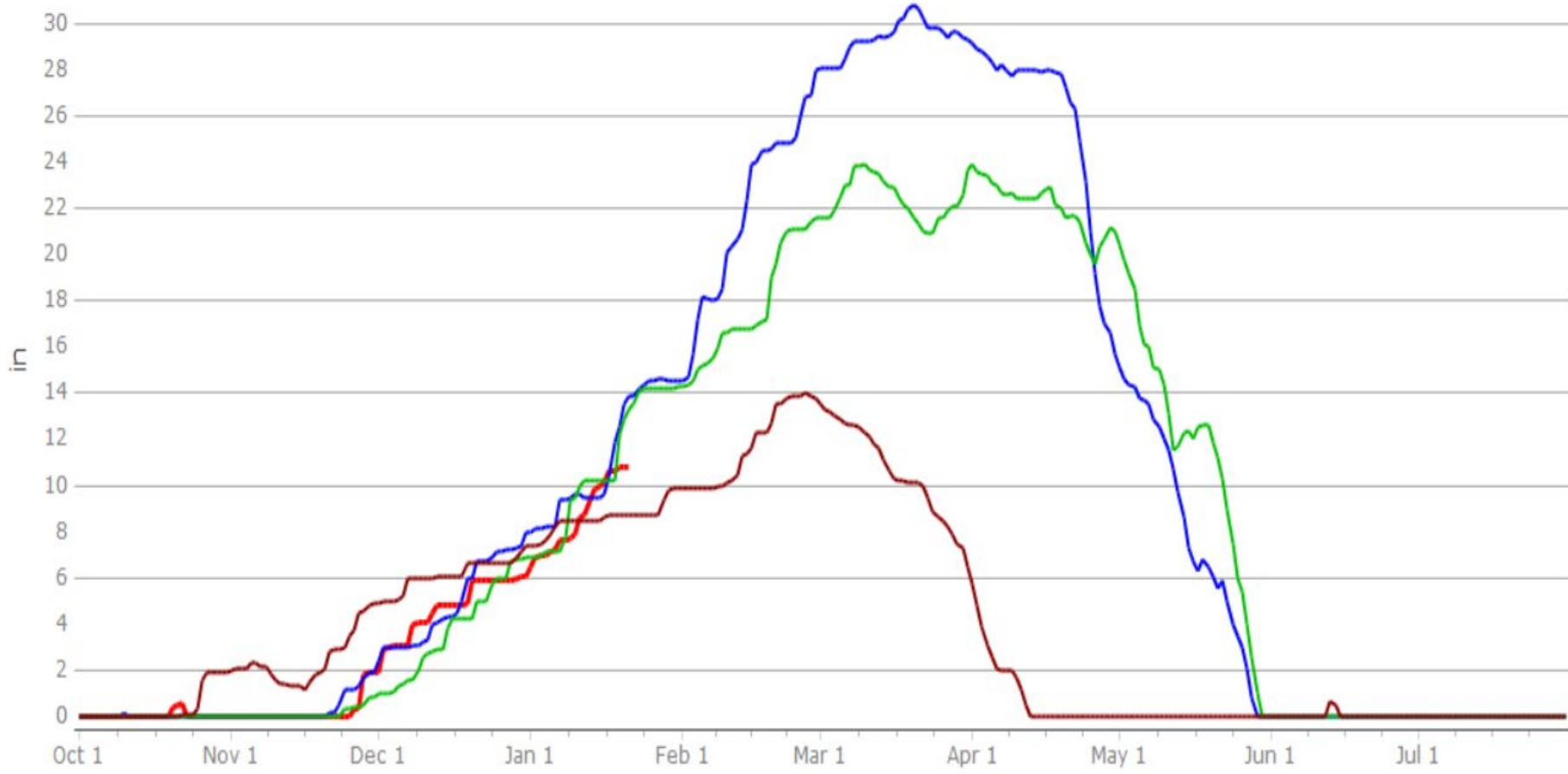
\*\*\* Coordinated with USACE

\*\*\*\* RFC



### BEAR SADDLE Elevation:6180.000

— 2020 — 2019 — 2017 — 1992



# Owyhee Reservoir Basin Characteristics

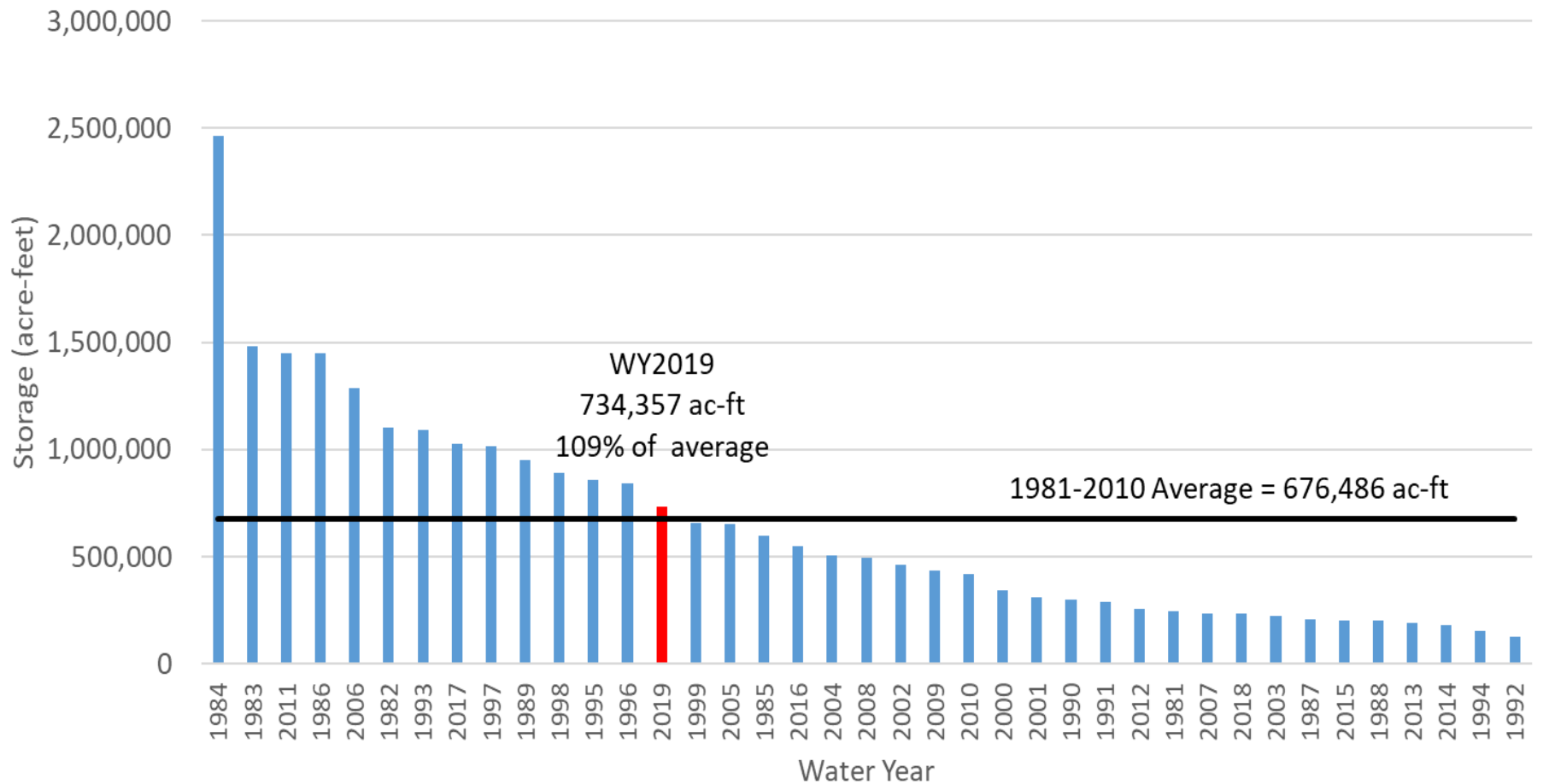
Watershed Area: 10,900 sq.  
mi.

Watershed Elevation Range:  
2,420 ft to 10,400 ft, mean of  
5,160 ft

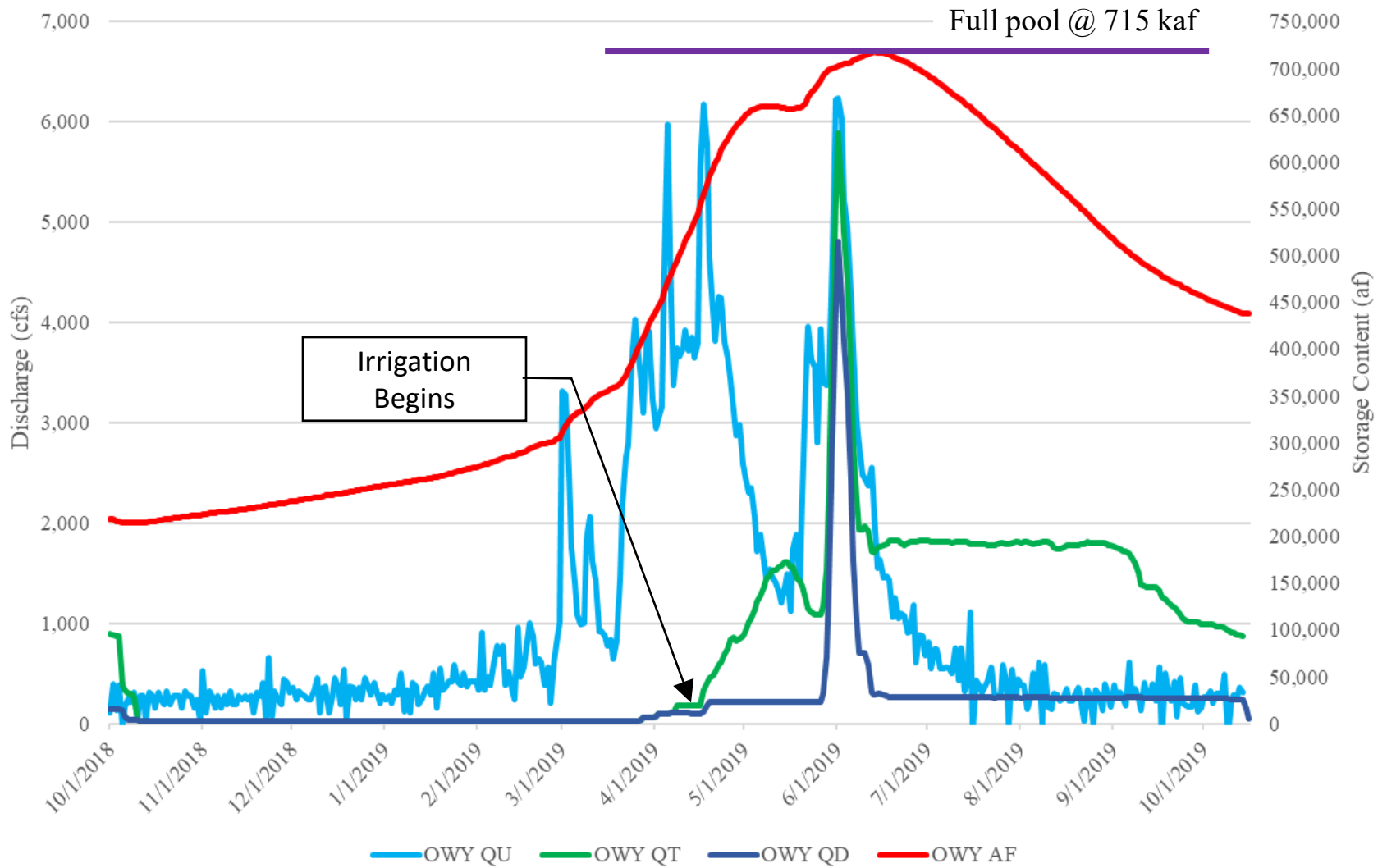
Annual Peak Flows: Ranges  
from 780 cfs to 46,560 cfs,  
2019 peaked at 6,228 cfs on  
June 1<sup>st</sup>



Owyhee Reservoir Inflow  
WY1981 to WY2019  
Jan 1 - Jul 31



# Owyhee Reservoir Operations

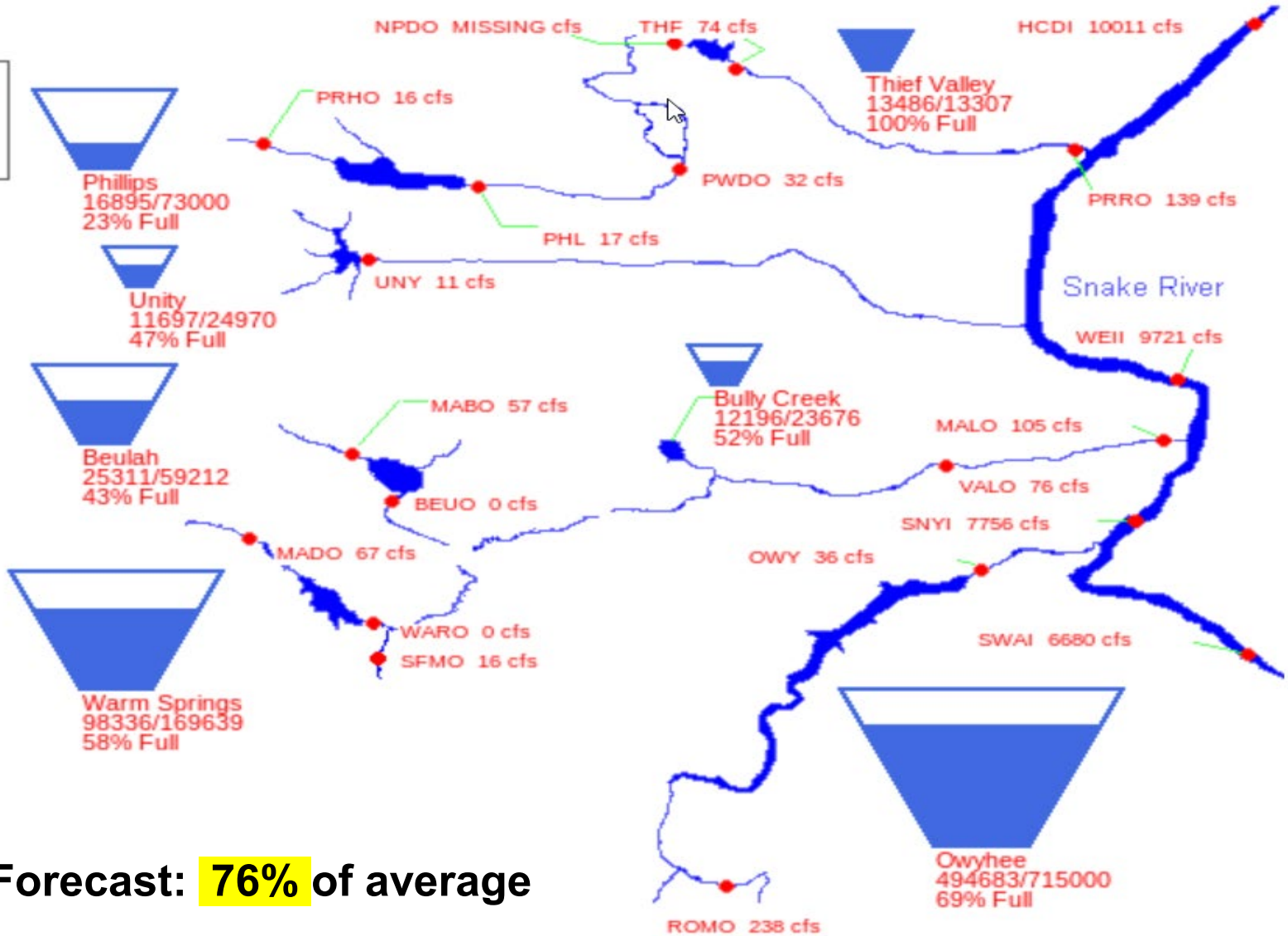
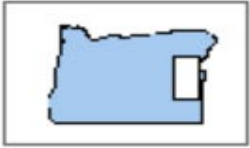




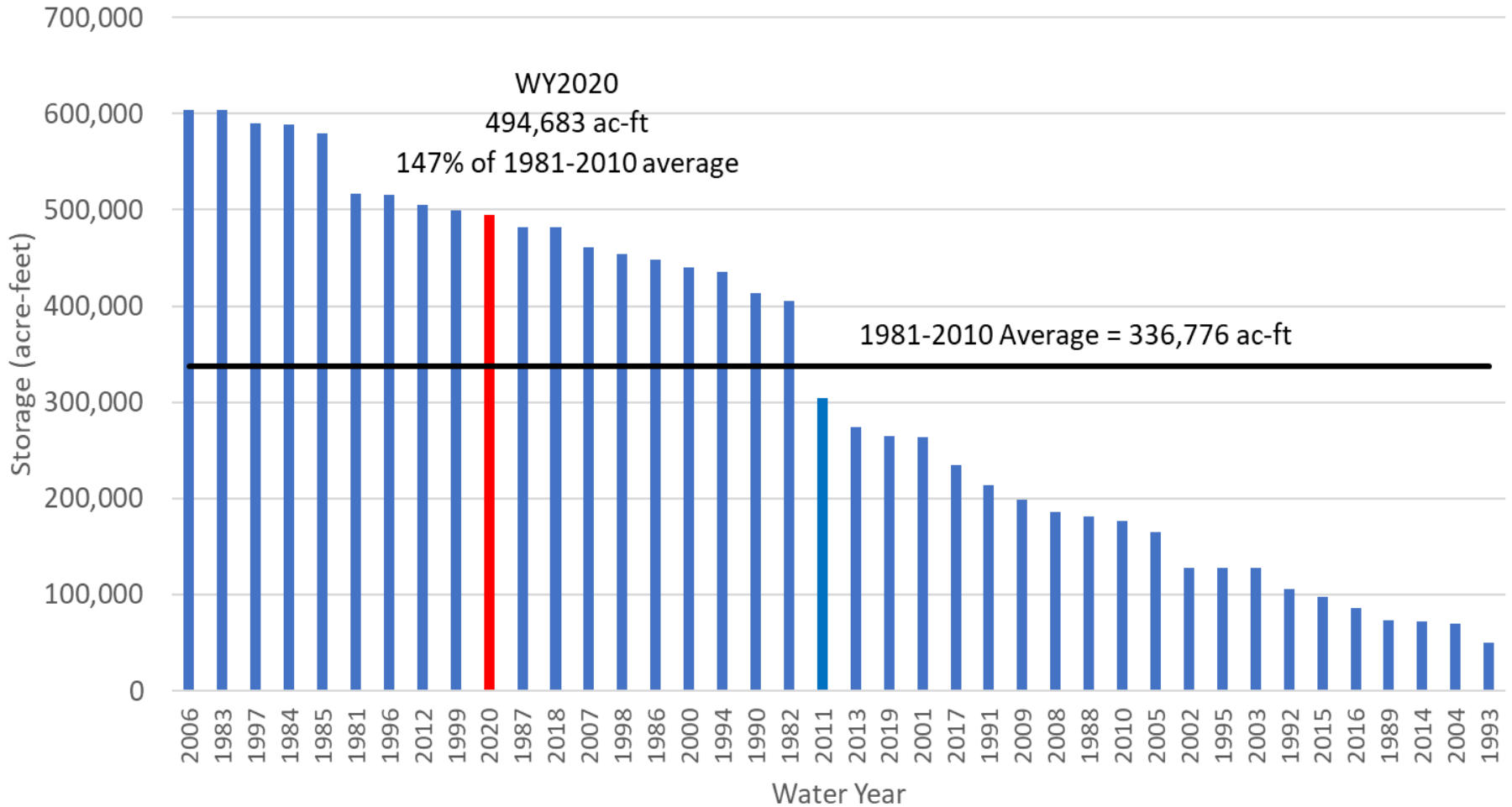
# WY2020 Current Conditions



01/20/2020



# Owyhee Reservoir System January 20 Contents WY1981 to WY2020



**Ryan Hedrick**  
**Middle Snake Field Office**  
**Hydrologist**  
**208-383-2281**

