

Paying for that Project: Reclamation Funding Opportunities & An Example of NRCS Funding

**Heather Rice
American Falls-Aberdeen
Ground Water District**



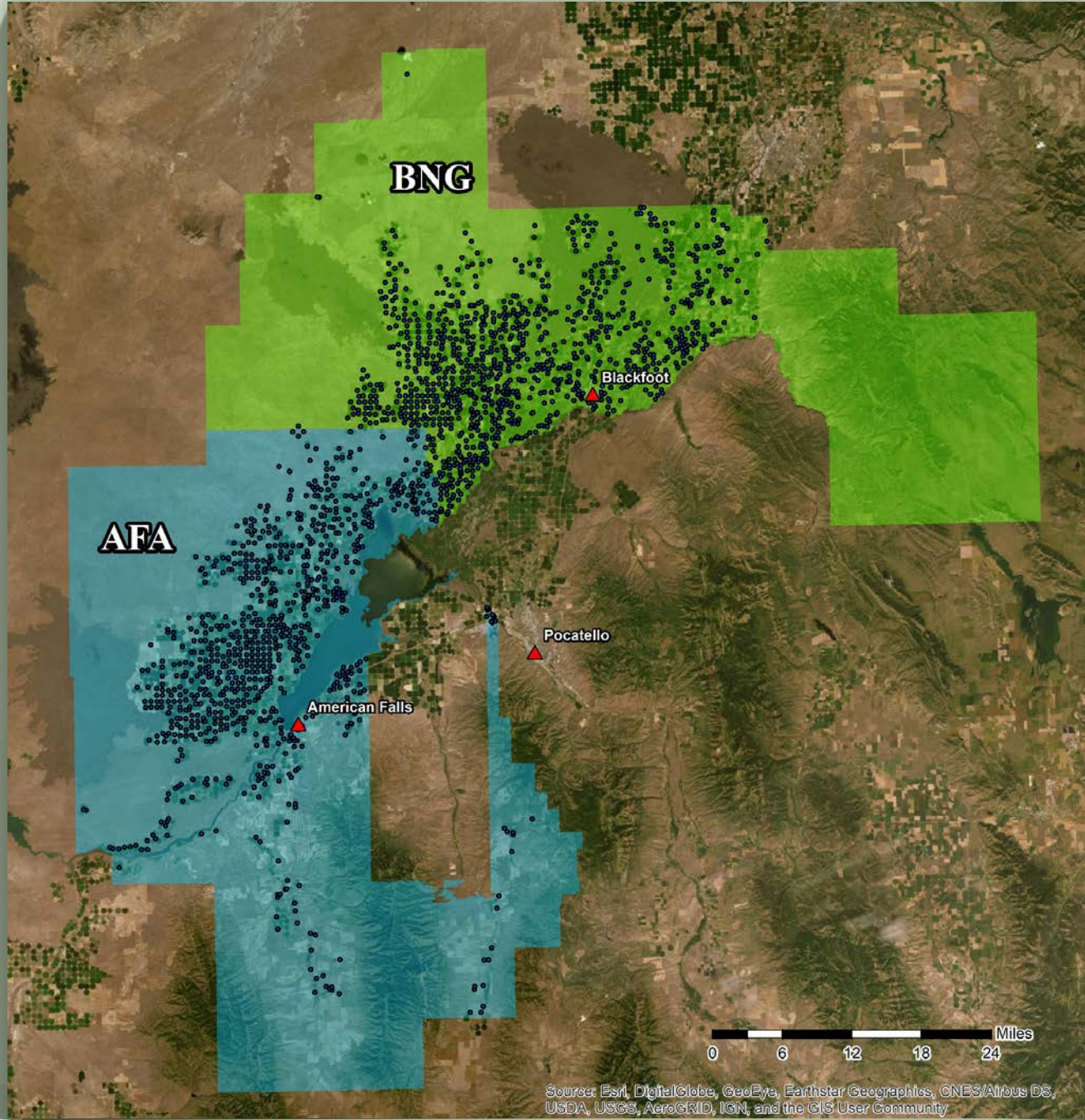
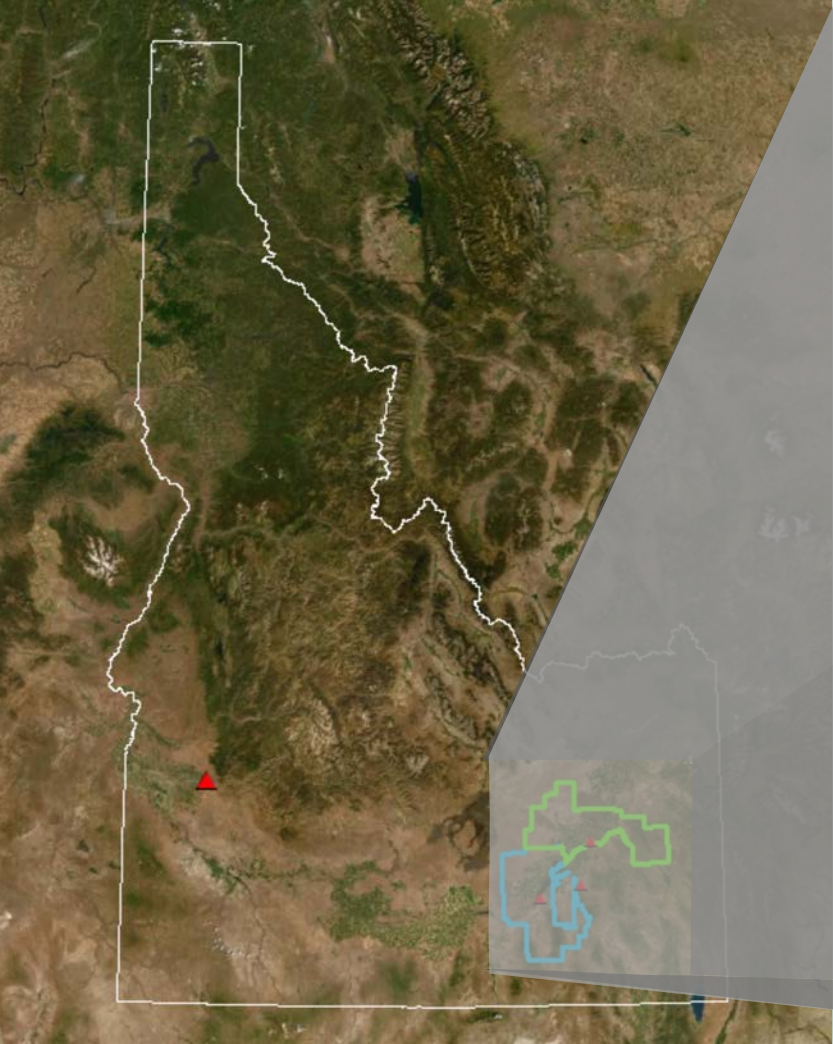
Conservation Innovation Grant

- USDA-NRCS-EQIP
- 50:50 Cost Share
(equipment, employee wages, supplies)
- Up to \$75,000
- Submitted through www.Grants.gov

Ground Water Districts

BNG 1024 wells/ 150,000 acres

AFA 831 wells/ 145,000 acres

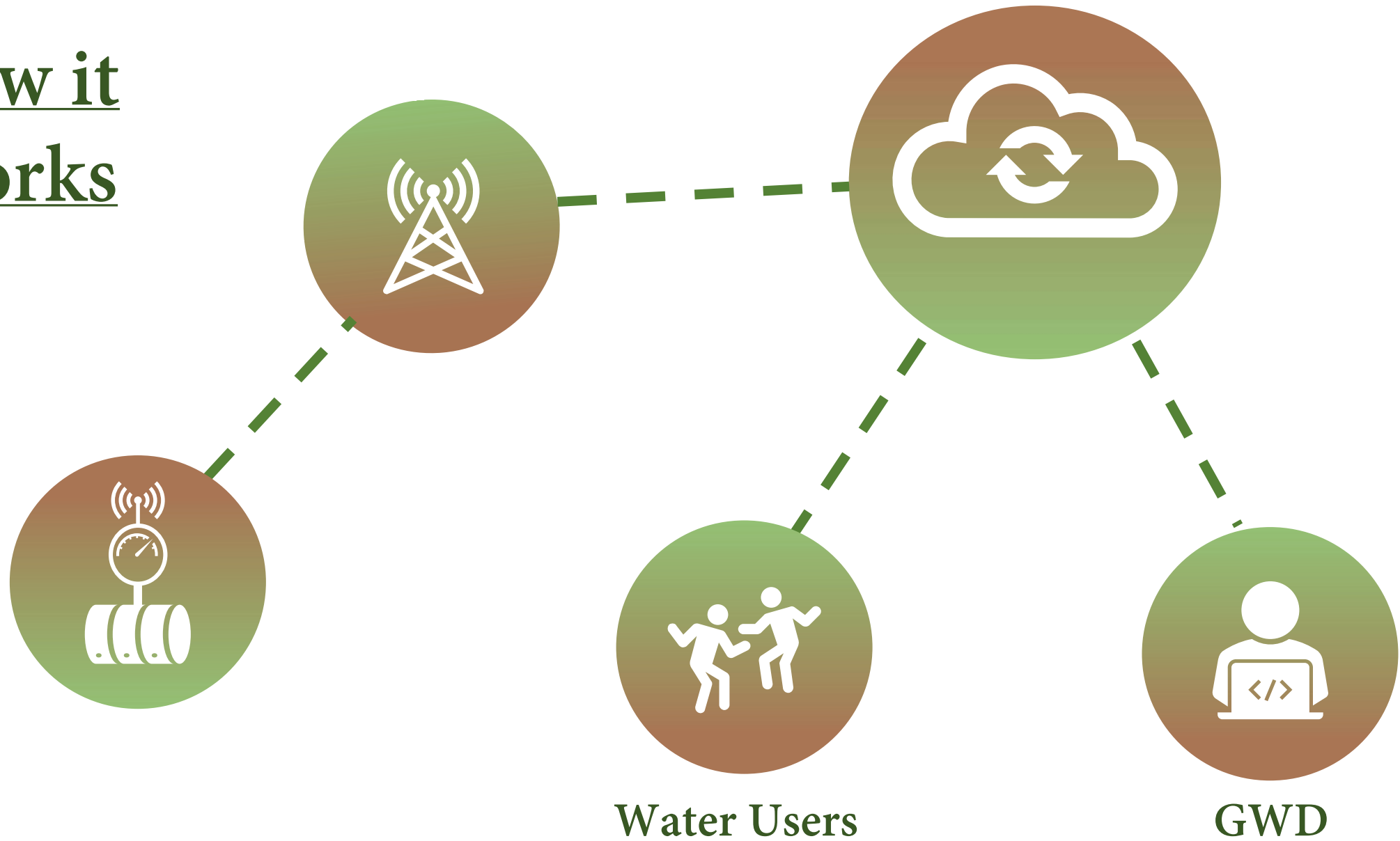




Project Background

- 2015 SWC/IGWA Settlement Agreement
- 2015- 2018 Installing Flow Meters
- Fall & Spring Meter Readings

How it Works







Overview

DASHBOARDS

Overview

Members

Water Rights

Points of Diversion

Devices

TOOLS

Reports

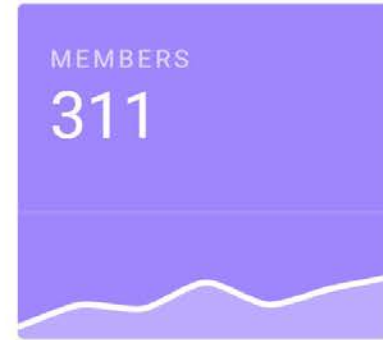
My Profile

User Manager

Billing Manager

Settings

Logout



Allocation Excess

Allocation Deficiency

DASHBOARDS

[Overview](#)

[Members](#)

[Water Rights](#)

[Points of Diversion](#)

[Devices](#)

TOOLS

[Reports](#)

[My Profile](#)

[User Manager](#)

[Billing Manager](#)

[Settings](#)

[Logout](#)

PROFILE

[HISTORY](#)

[DOCUMENTS](#)

State Data

Owner: STATE OF IDAHO
Priority Date: 1977-01-31
CFS: 1.3
Total Acres: 65
Metal Tag: A0010202

District Data

Assessed Member: [State Of Idaho Department Of Fish & Game](#)
Eff. Priority Date: 1977-01-31
Allocation Rate: Tier 2
Dual Supply: no
Supplemental: no
CREP: no
Skip assessment of: Mitigation Minimum,

- [Edit](#)
- [Update State Data](#)
- [Docs](#)
- [Maps](#)
- [Reports](#)

Details

Code	Type	Eff. CFS	Eff. Acres	
01	Irrigation	1.3	65	Edit

Attached Points of Diversion

WMIS	Name	Location
600269		F 12 1



AF/Aberdeen

831 POINTS OF DIVERSION OF ANY STATUS

Point of diversion manager

+ Add a point of diversion

Search...



DASHBOARDS

Overview

Members

Water Rights

Points of Diversion

Devices

TOOLS

Reports

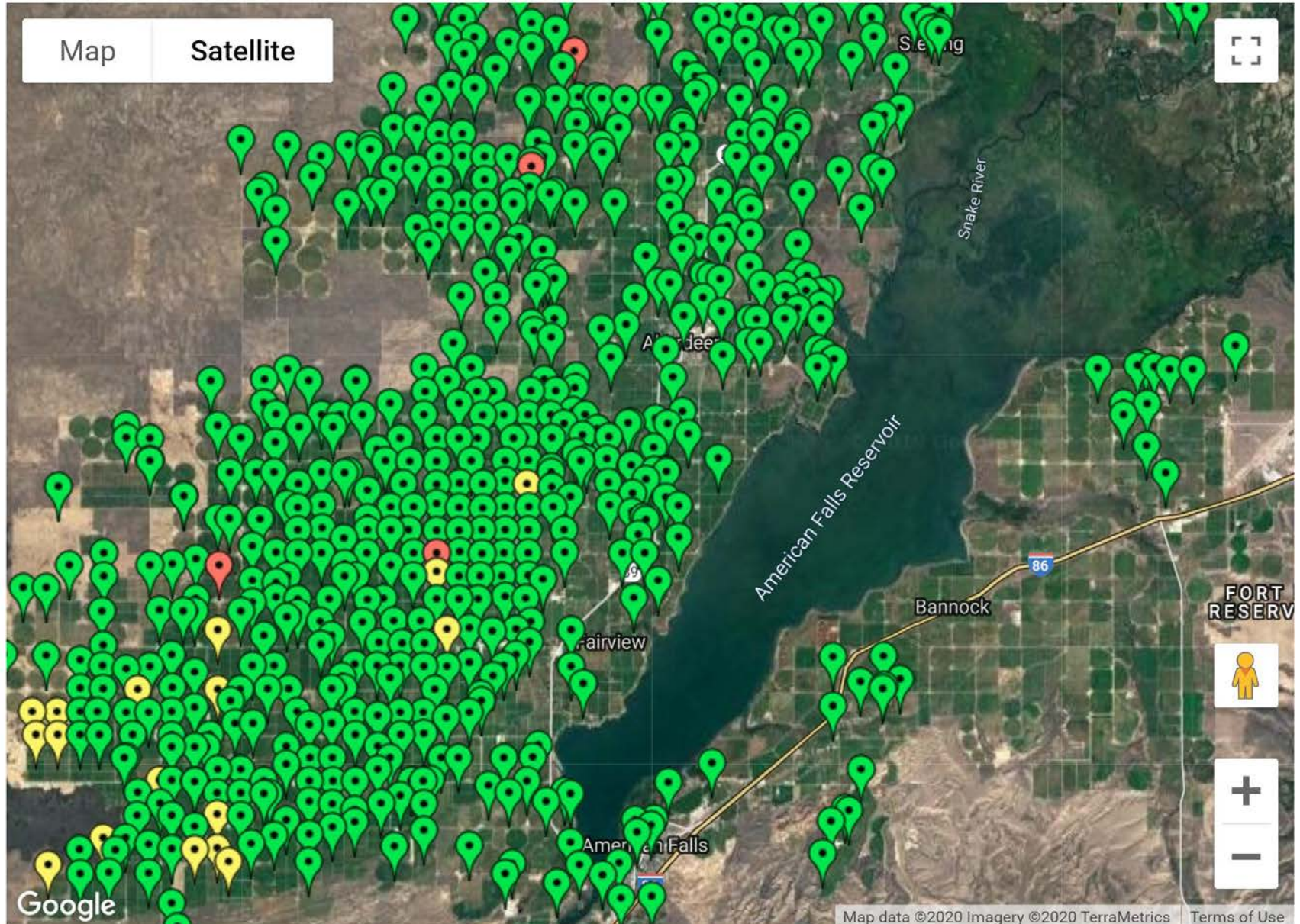
My Profile

User Manager

Billing Manager

Settings

Logout



Point of diversion manager

[+ Add a point of diversion](#)

DASHBOARDS

[Overview](#)

[Members](#)

[Water Rights](#)

[Points of Diversion](#)

[Devices](#)

TOOLS

[Reports](#)

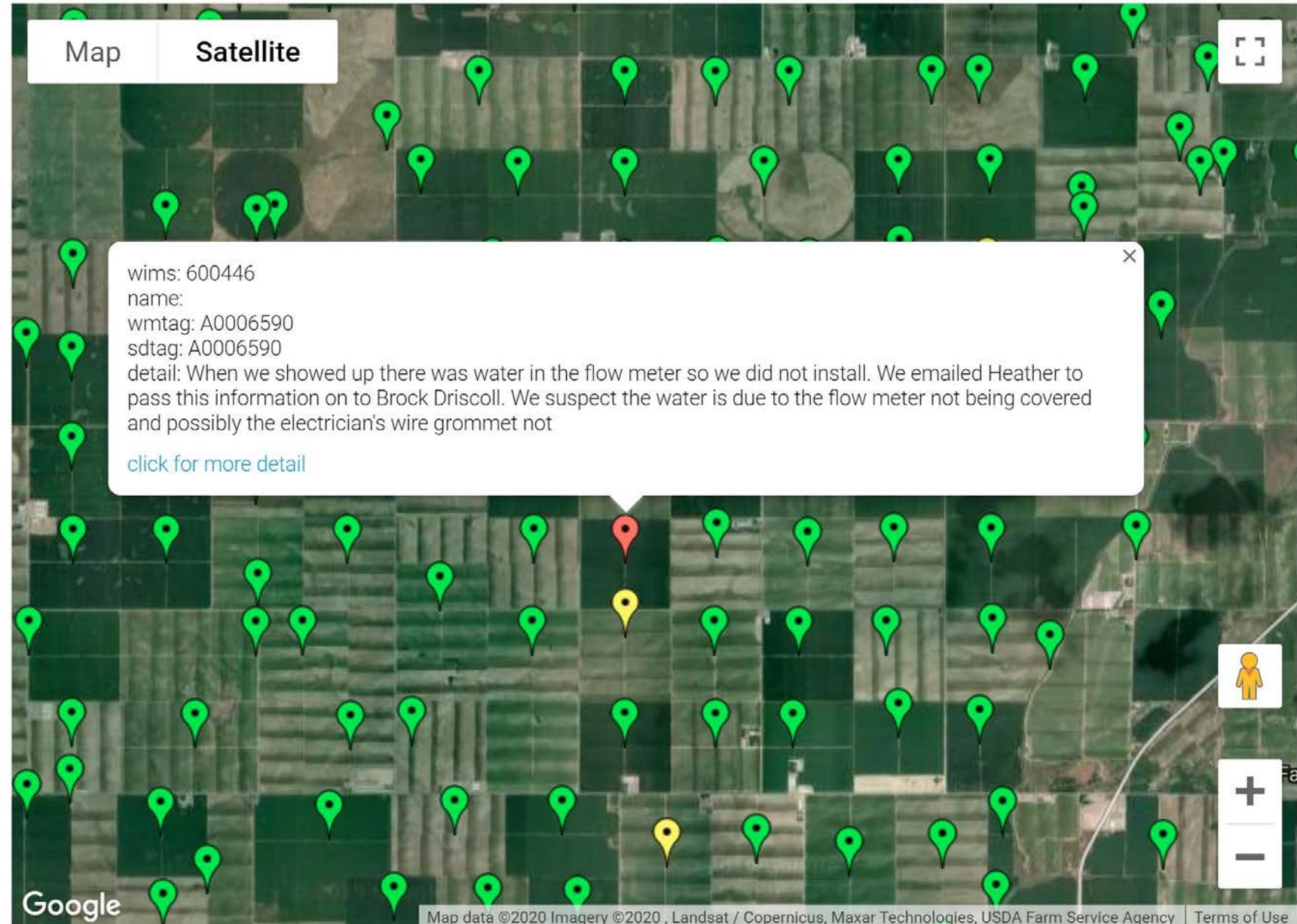
[My Profile](#)

[User Manager](#)

[Billing Manager](#)

[Settings](#)

[Logout](#)



Map **Satellite**

wims: 600446
name:
wmtag: A0006590
sdtag: A0006590
detail: When we showed up there was water in the flow meter so we did not install. We emailed Heather to pass this information on to Brock Driscoll. We suspect the water is due to the flow meter not being covered and possibly the electrician's wire grommet not
[click for more detail](#)

Google

Map data ©2020 Imagery ©2020 , Landsat / Copernicus, Maxar Technologies, USDA Farm Service Agency Terms of Use

Allocations

[+ Manual Allocation Transaction](#)

Date	Type	By	WR	Acre Feet
2018-06-14	allocation	system	35-2069J	376.20
2018-06-14	allocation	system	35-2583	697.40
2018-06-14	allocation	system	35-2601	343.20
2018-06-14	allocation	system	35-7865	261.80

Usage this period

No usage has been recorded for this period yet

Totals

Allocations	1678.60
Usage	0.00
Over/Under This Period	1678.60
Previous Balance Forward	0.00
Current Balance	1678.60



Things to Remember...

- Ask ?'s
- Don't wait to until last minute using [Grants.gov](https://www.Grants.gov)
- Pray!

Contacts

Denise Adkins

208-685-6991

Denise.Adkins@usda.gov

USDA/NRCS

www.nrcs.usda.gov

Alan Jackson

Bingham Ground Water District

208-680-9838

AlanJ@binghamgroundwater.com



**TETON
TECHNOLOGY**

www.tetontechnology.com

1-800-625-0012

Heather Rice

American Falls-Aberdeen

Ground Water District

208-844-0419

HeatherR@afagroundwater.com

Federal Grants

www.Grants.gov