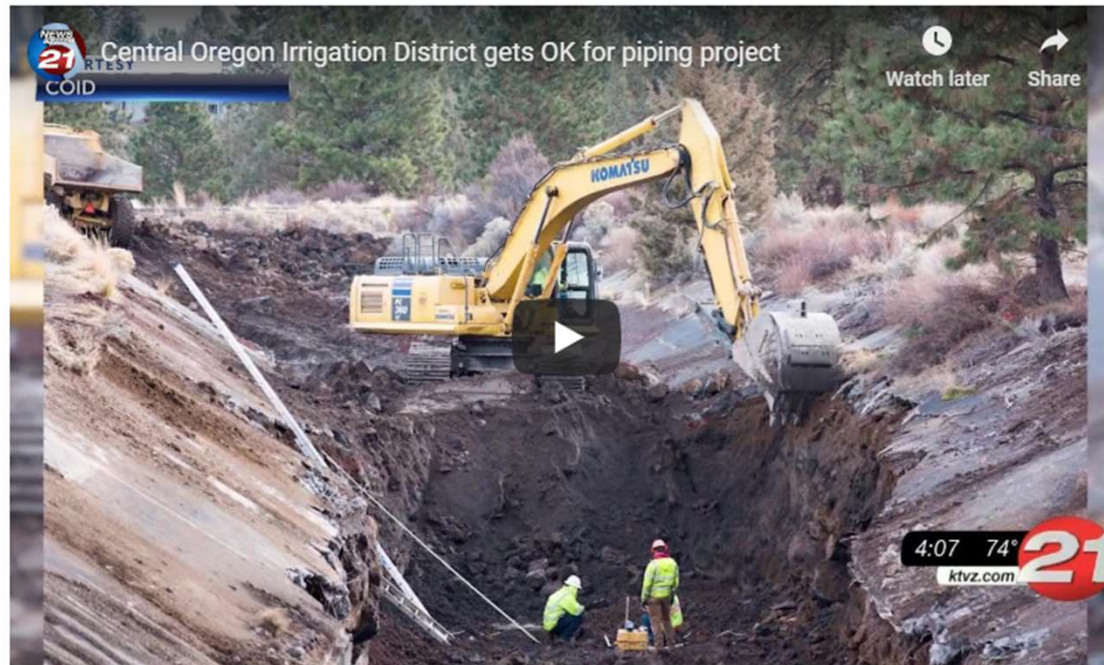




CENTRAL OREGON
Irrigation
DISTRICT
Since 1918

**Modernizing Irrigation Infrastructure
&
Honoring Your History**

Feds OK Central Oregon Irrigation District \$30 million canal-piping project

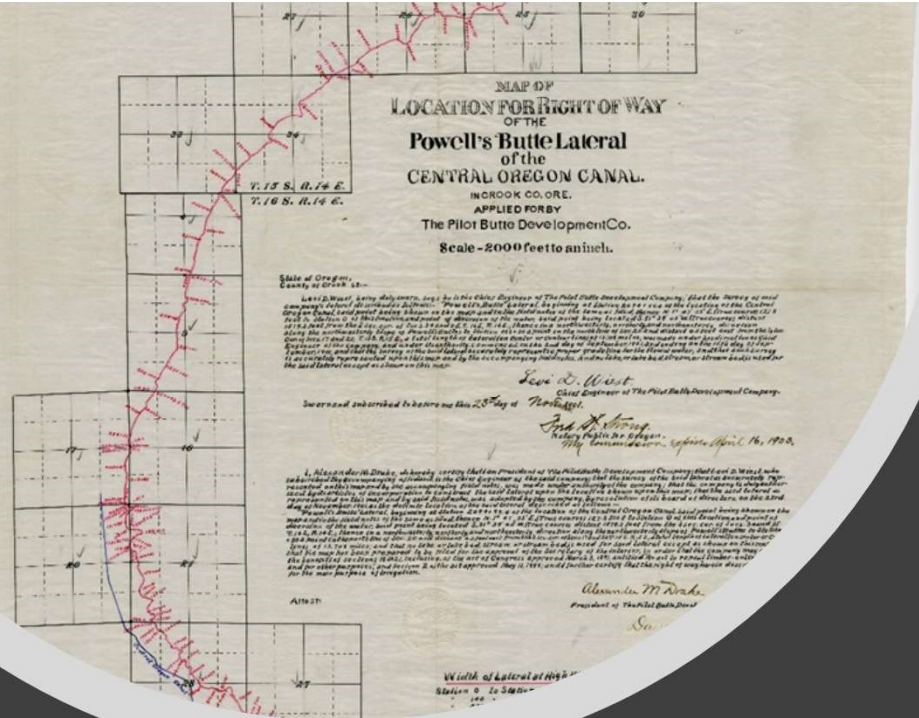


Water savings will pass to North Unit Irrigation District



Get your House in Order

Know and Embrace your history
Take a Holistic Approach
Tell your story



Know your History

Inventory documents.
Map infrastructure assets.

*Also know as Multiple Property Document or MPD.

Department of the Interior,
NOVEMBER 9, 1908
Approved subject to all
valid existing rights.
Frank Carson
Secretary.

THE DESCHUTES IRRIGATION & POWER CO.

EAST BRANCH PILOT BUTTE CANAL

SCALE: 1" = 1000'

Benefits

CLINE FALLS THEN & NOW

EARLY DAYS

Falls on the Deschutes River at Redmond was named for Cass & Cline, his wife Emily (daughters Meds and Winifred) homesteaded the land near falls in 1890.

1902, the Cline Falls Power Irrigation Company filed hydroelectric energy and irrigation water rights on the Deschutes River.

1902, the Company purchased land from the Cline Family installed a 36" Leffel vertical turbine. The turbine was used to pump water up the ridge to serve new City of Cline Falls. Elopers hoped Cline Falls would become the primary community in Central Oregon in the railroads finally arrived.

Unfortunately, the dreams of early elopers were dashed when the road was built on the east side of the river instead of the west. By the small town of Cline Falls fading. The post office closed, storefronts were shuttered, and homes were abandoned.

1912-2006

GENERATING POWER

In 1912, the first electric power was generated at the plant when a 75kW generator was installed to supply power to Redmond and Prineville. By 1913, Cline Falls Power Company had obtained the water rights and property, and entered into a long-term lease agreement with the Pacific Power & Light Company's predecessor, for the operation of the power plant. In 1915, a new 45" Leffel turbine was installed to increase horsepower to meet demand. By 1916, a new 300' long timber crib dam was installed from bank to bank, replacing the original wing dam.

The original powerhouse was destroyed by lightning, and in 1920, a fire destroyed the pumping plant. Central Oregon Irrigation District purchased the Cline Falls Power Company in the summer of 1950 and continued to lease the site to Pacific Power & Light Company. In 1943, Pacific Power & Light Company removed the older structures and built a new power plant downstream from the original site. The new plant included a larger generator capable of 4,700,000 kW annually and was built to provide additional power to the Redmond/Prineville power grid during World War II. Due to the ongoing war effort and a shortage of supplies, many of the materials used to build the new plant were salvaged from other plants and buildings. The 9' diameter steel penstock was once a smokestack from a manufacturing plant in Portland.

The power plant continued to produce energy for decades, finally closing operations in 2006. By the time the 100-year lease to Pacific Power & Company expired in 2013, the company had removed most of the equipment, leaving the buildings vacant.

2017-present

RESTORING THE RIVER

In 2017, COID decided to remove the dam and dams. An environmental investigation found hazardous chemicals at the site left over from power production years, so special cleanup was required to clear away harmful substances from the area. Once the site was cleared, COID and the Upper Deschutes Watershed Council are working to restore the riparian area around the old plant.

The river is now free-flowing, is improved, and the falls near Cline all those years ago through the canyon once again.

- Allows district to tell its own story.
- Streamlines agency reviews for grants and permits
 - Saves time
 - Saves money
- More comprehensive approach to mitigation

Challenges

- Hostile Nominations
- Section 106 may still be needed when working with adjacent districts
- PA allowed comments/challenges on a larger scale
- Time Consuming



How it Works

- Inventory and map all historic features
- Review of historic District documents
- MOU with agencies (BOR, COID and OR SHPO)
- Prepare and sign PA
 - Project Mitigation
 - Annual Reporting