



— BUREAU OF —
RECLAMATION

IWUA 2022

Water Operations

Middle Snake Field Office

Ryan Hedrick

Water Operations Lead

Boise River abv Lucky Peak Basin Characteristics

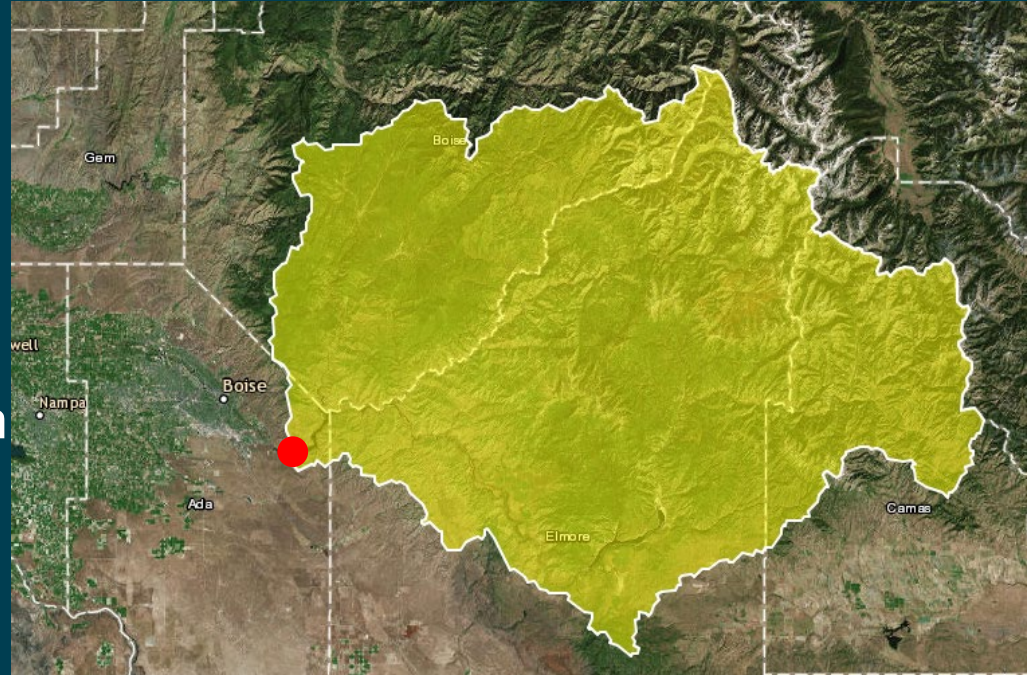
Watershed Area: 2,680 sq. mi.

Watershed Elevation Range:
3,055 ft to 10,600 feet, mean of
5,990 ft

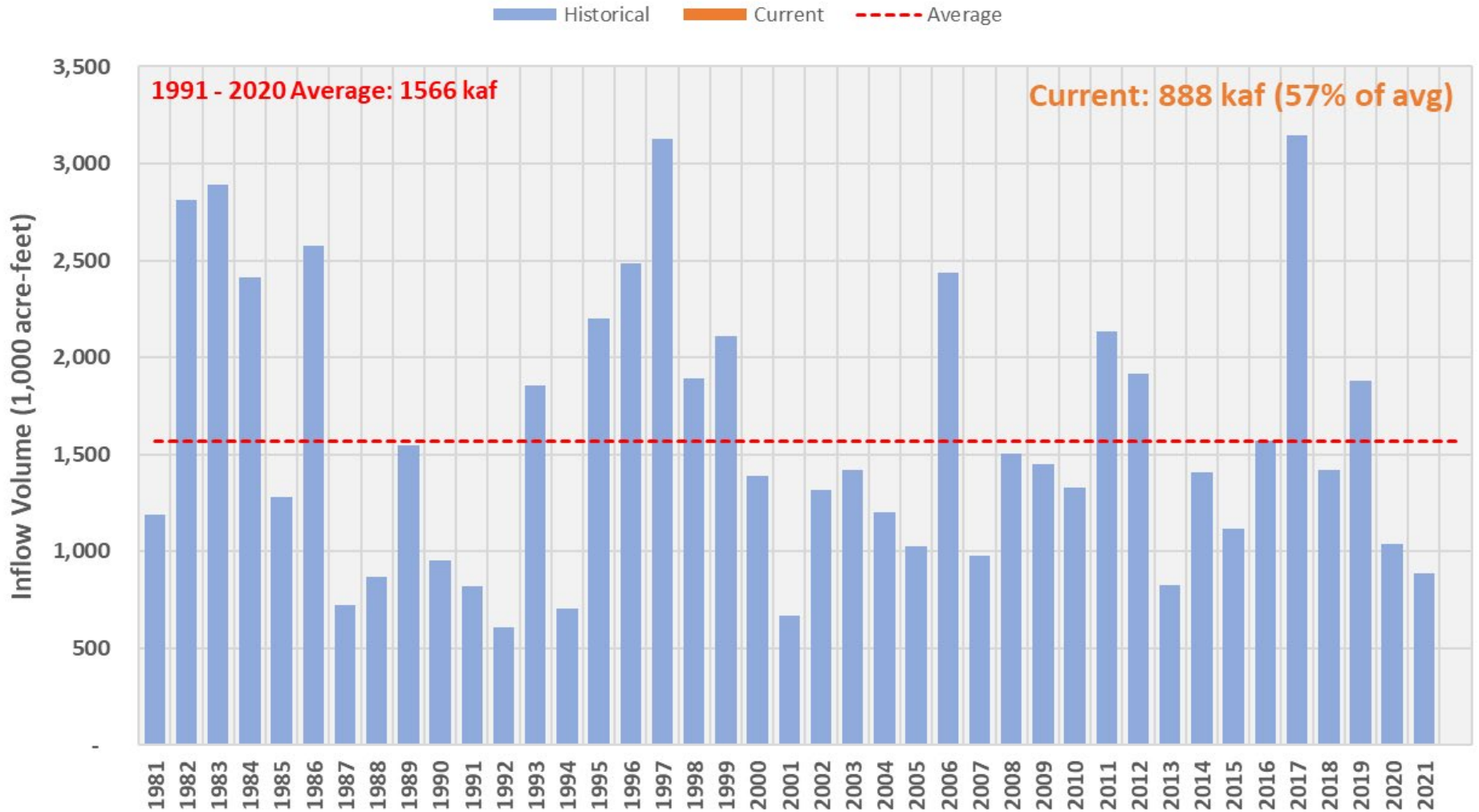
Annual Peak Flows: Ranges from
3,020 cfs to 25,040 cfs

2020: 8,415 cfs

2021: 5,959 cfs

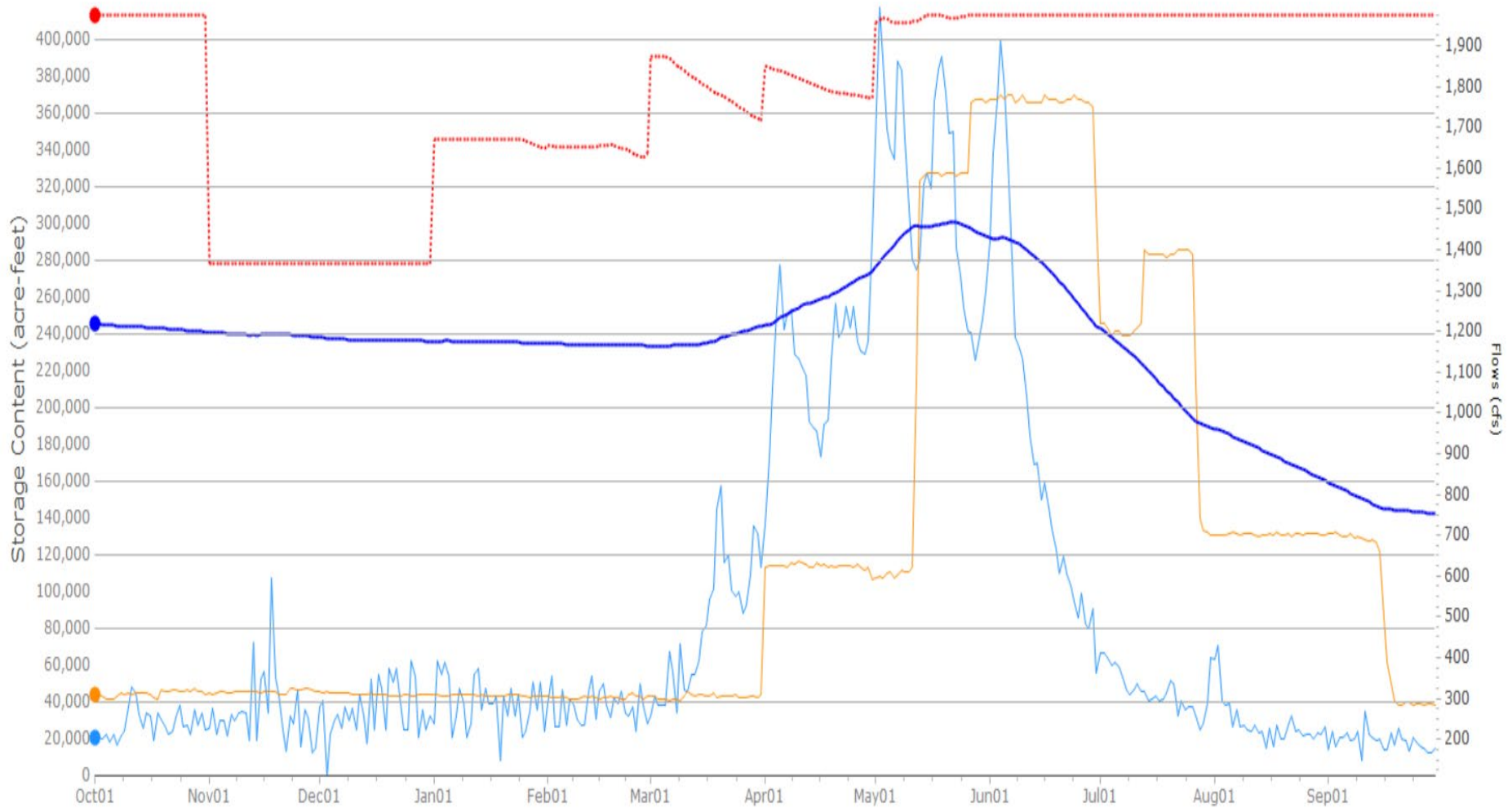


Boise System Inflows - Jan 1 to Jul 31



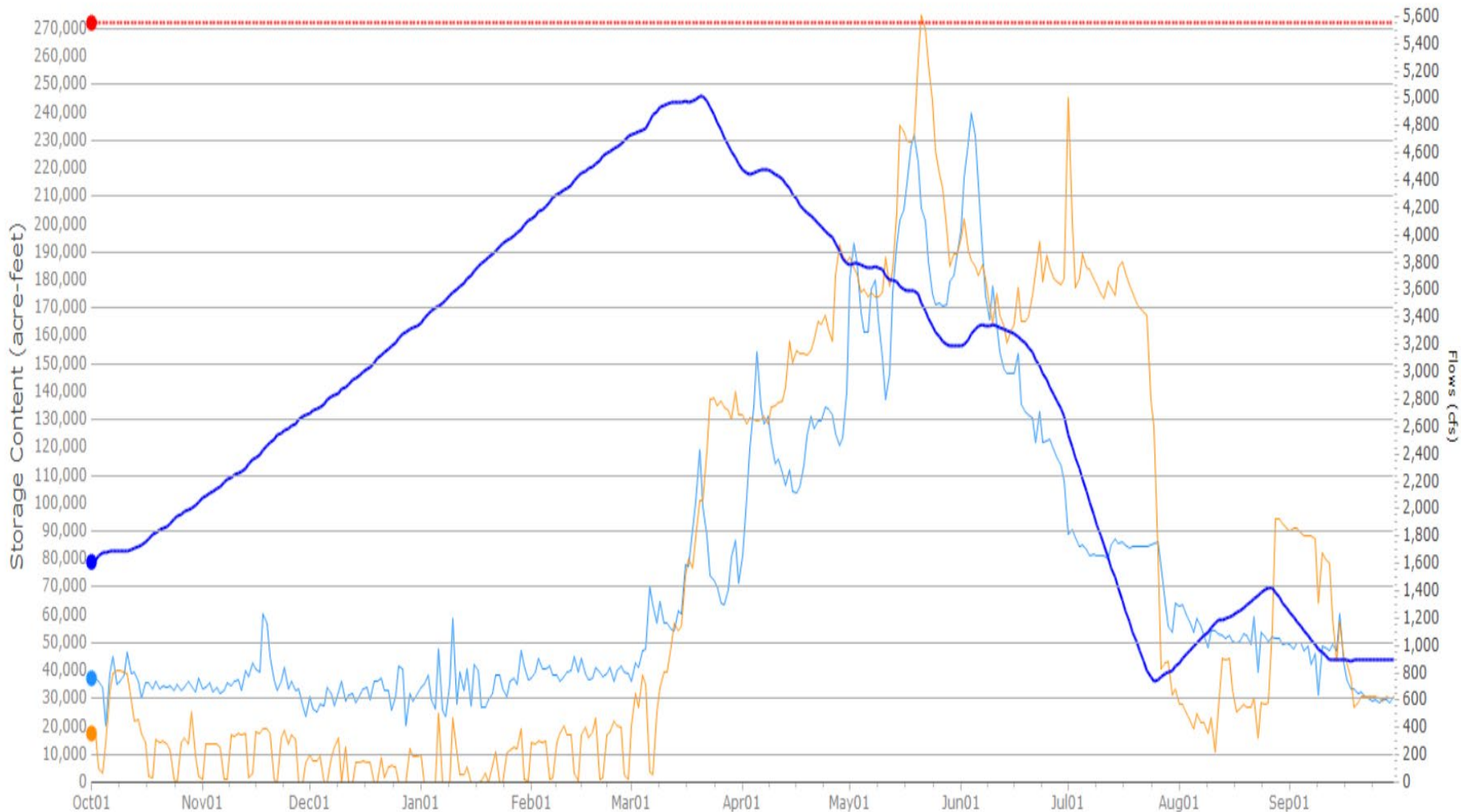
AND - Anderson

2021 ANDI QU 2021 ANDI QD 2021 Required 2021 Actual Storage



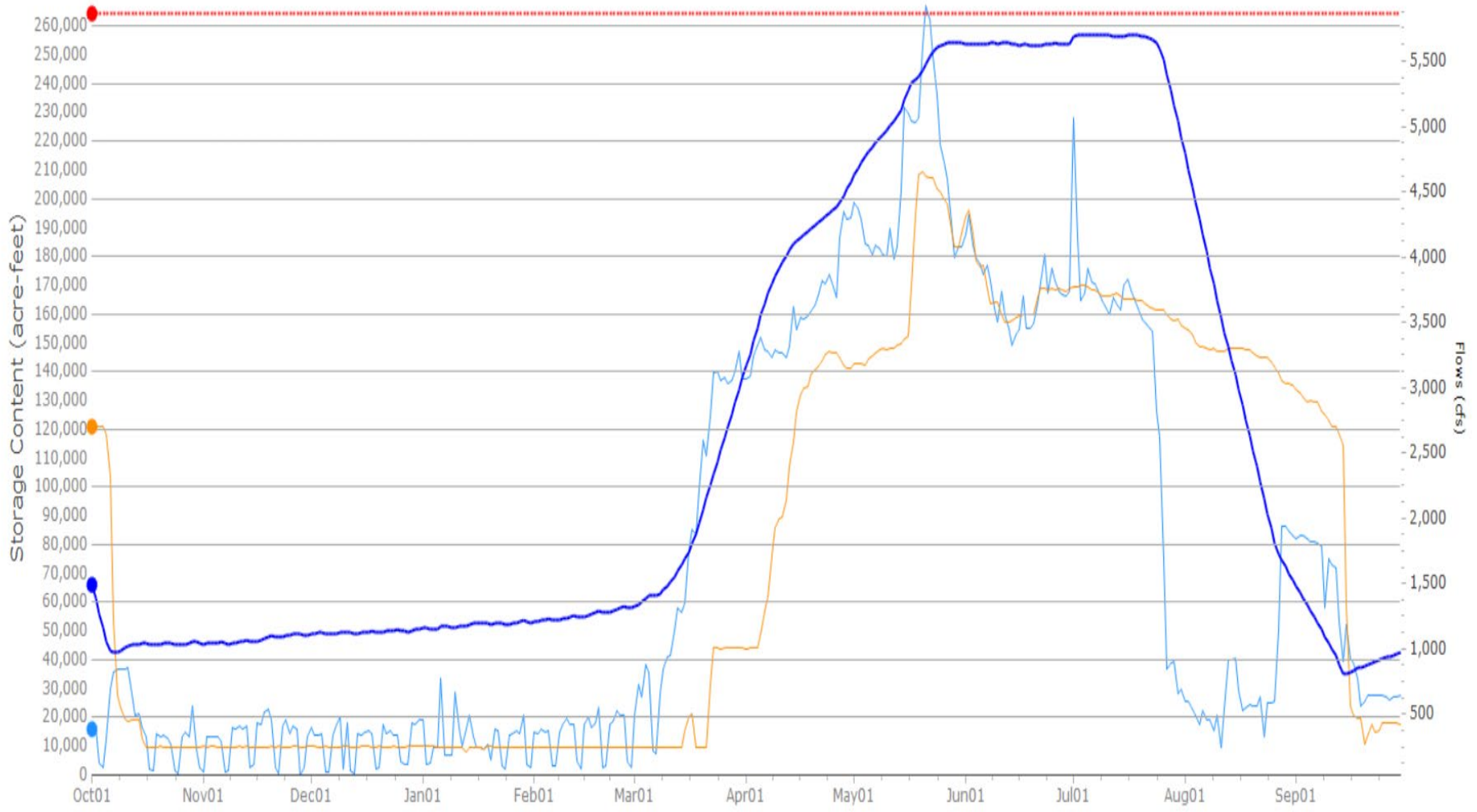
ARK - Arrowrock

2021 ARK ID 2021 ARKI QD 2021 Full Storage 2021 Actual Storage



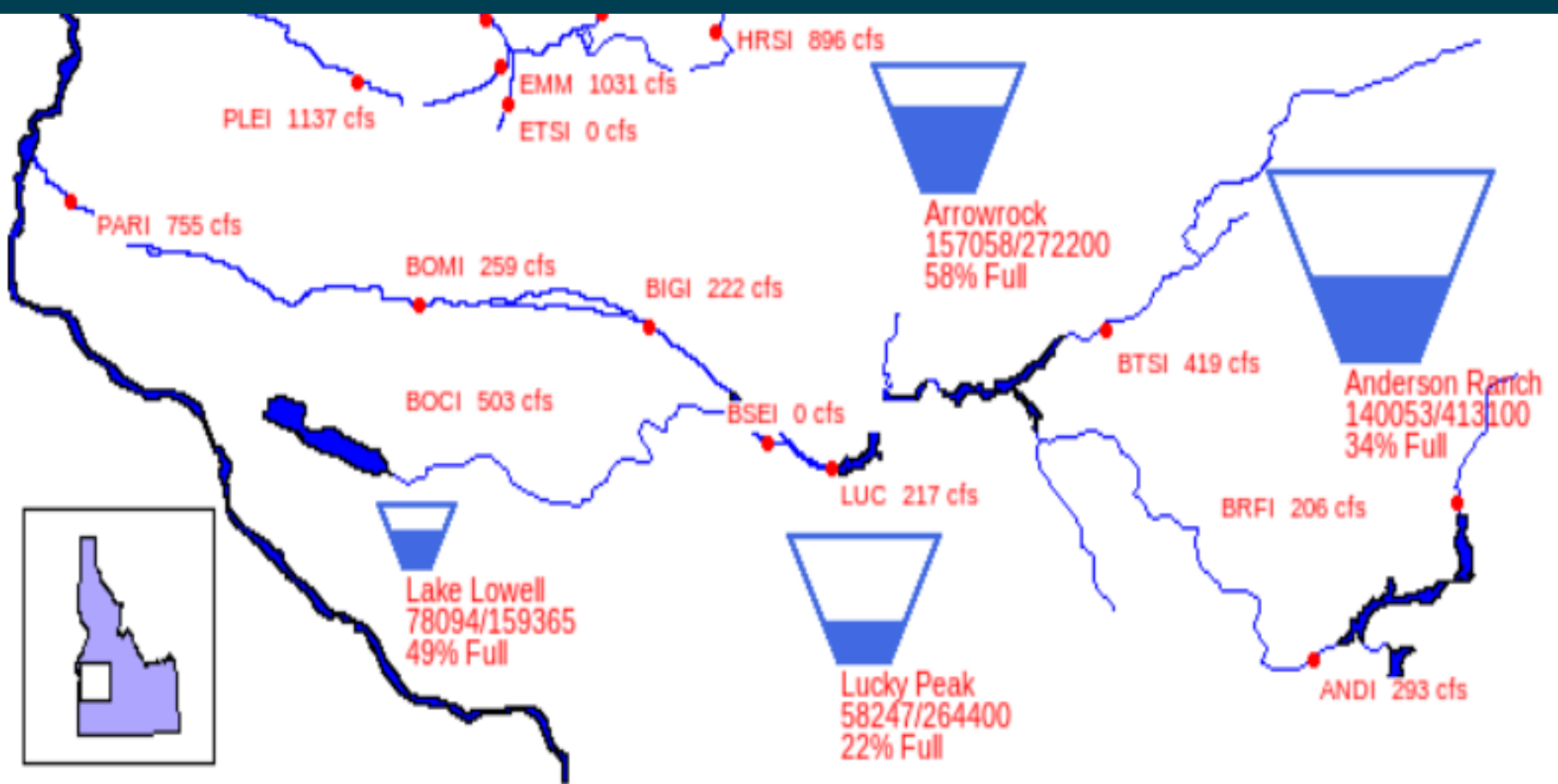
LUC - Lucky Peak

2021 LUC ID 2021 LUC QD 2021 Full Storage 2021 Actual Storage



WY2022 Current Conditions





Boise River system (Anderson Ranch, Arrowrock, Lucky Peak) is at 37 % of capacity.

Total space available: 594342 AF

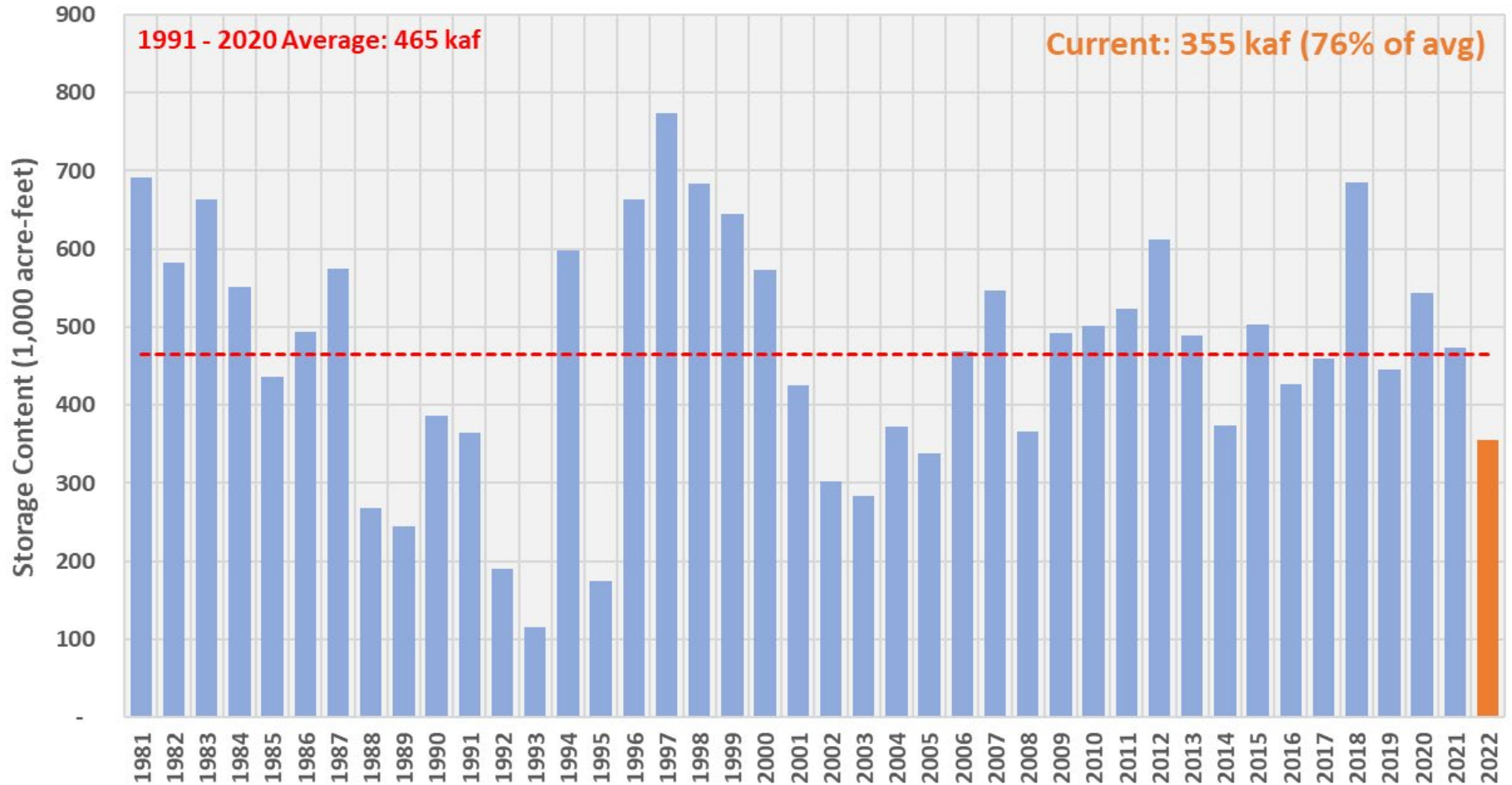
Total storage capacity: 949700 AF

Natural Flow: 794 CFS

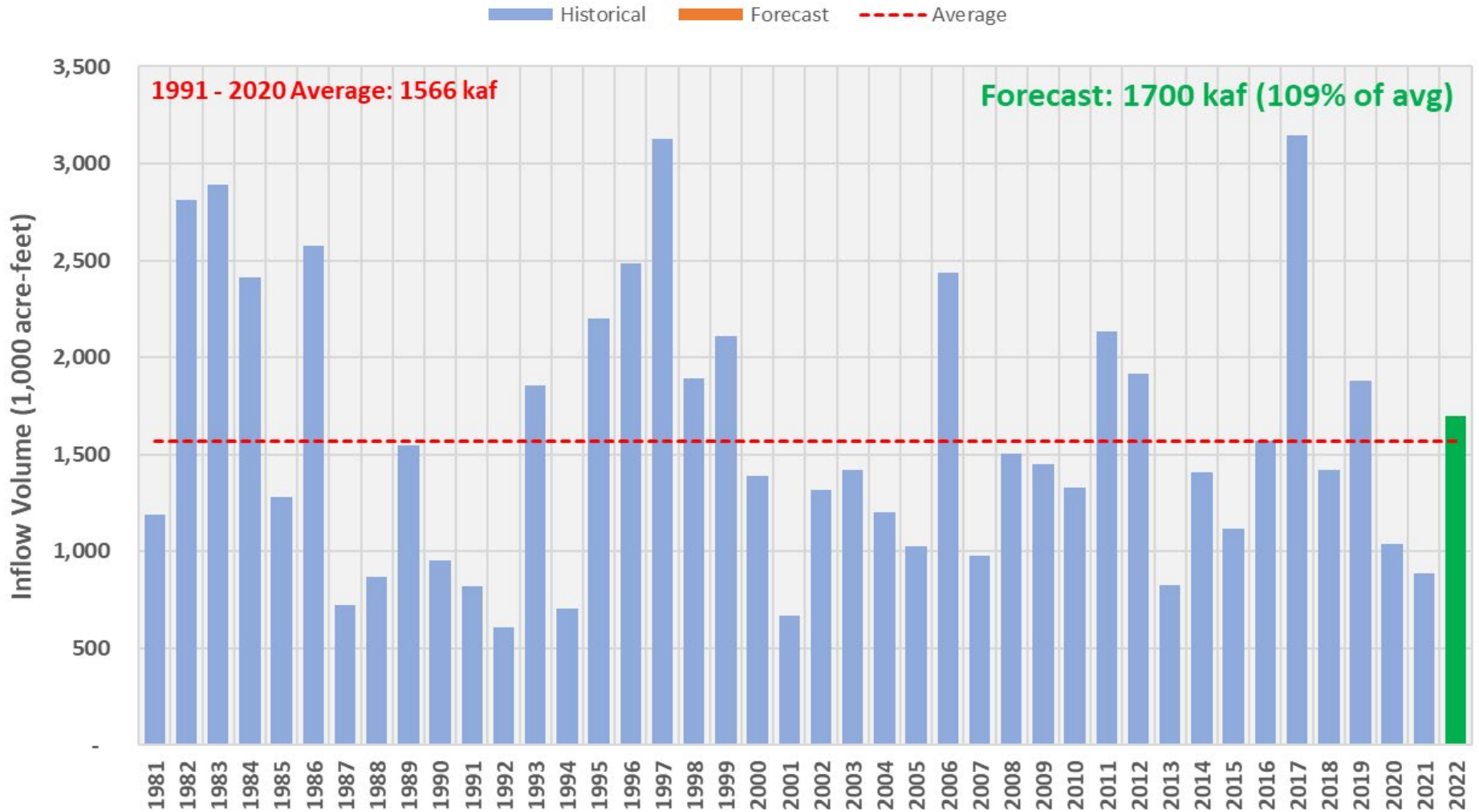


Boise System Storage Content - Jan 17, 2022

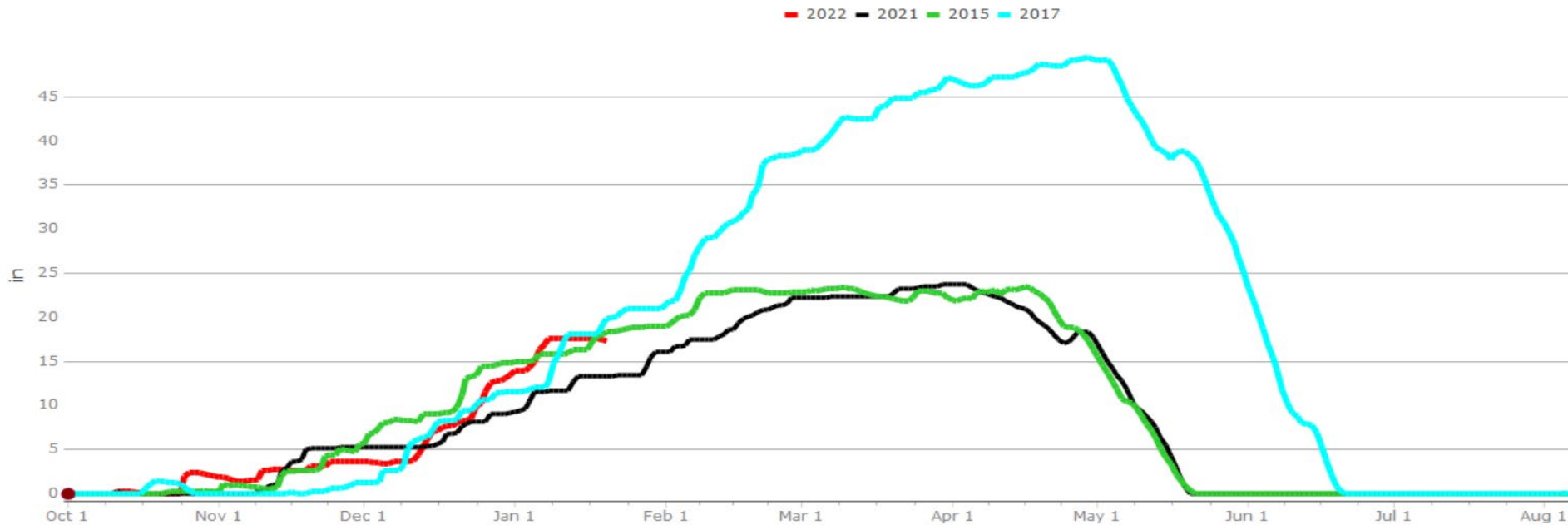
Historical Current Average



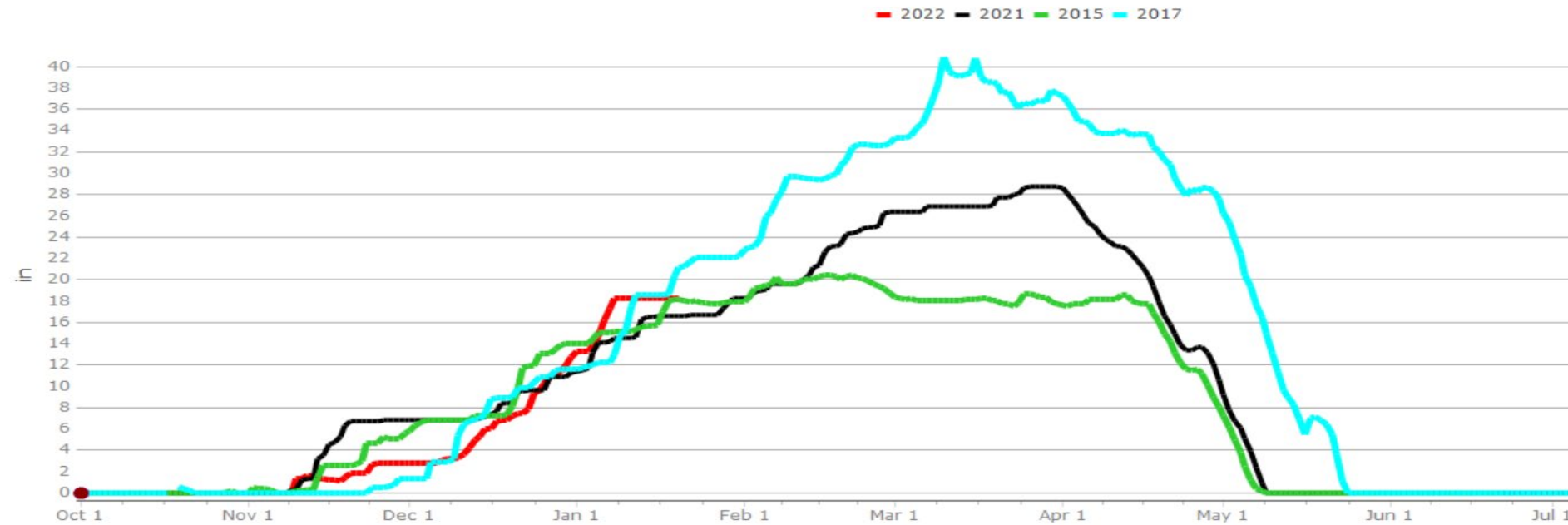
Boise System Inflows - Jan 1 to Jul 31



ATLANTA SUMMIT Elevation:7580.000



MOORES CREEK SUMMIT Elevation:6100.000



Payette Characteristics

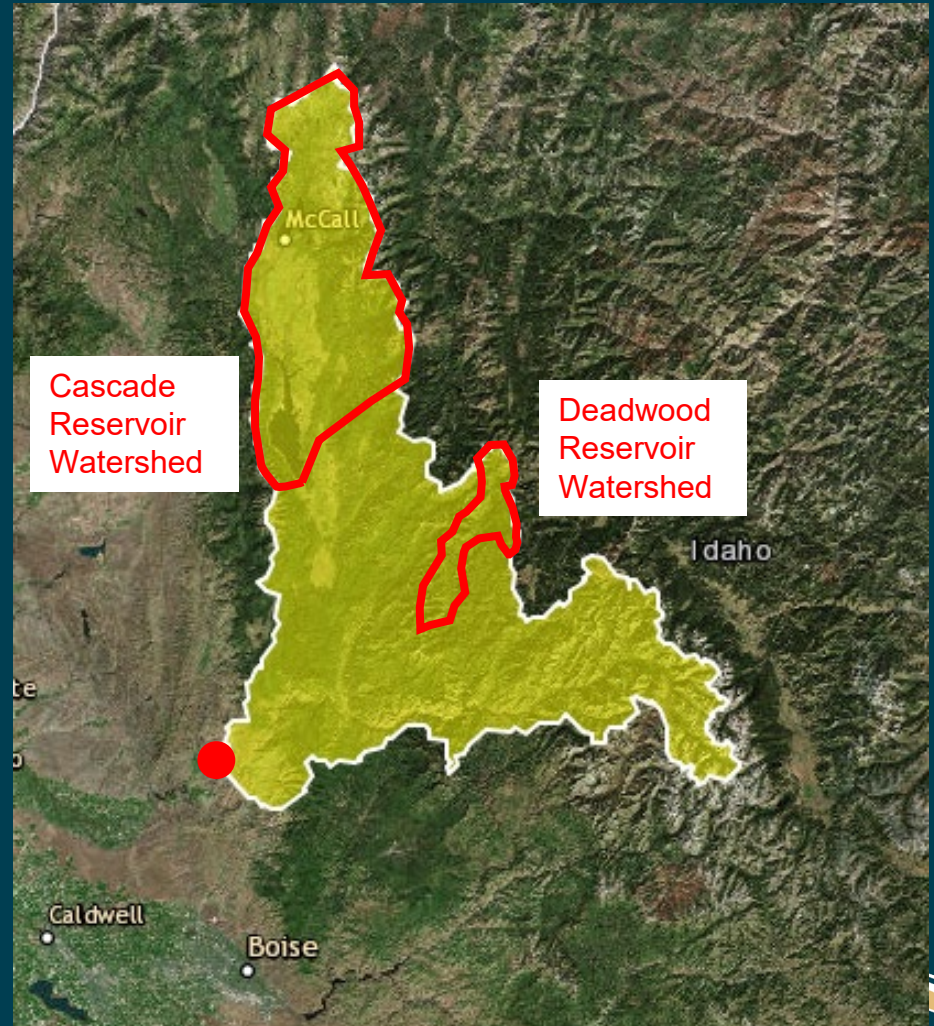
Watershed Area: 2,230 sq. mi.

Watershed Elevation Range:
2,300 ft to 10,700 ft, average
of 5,800 ft

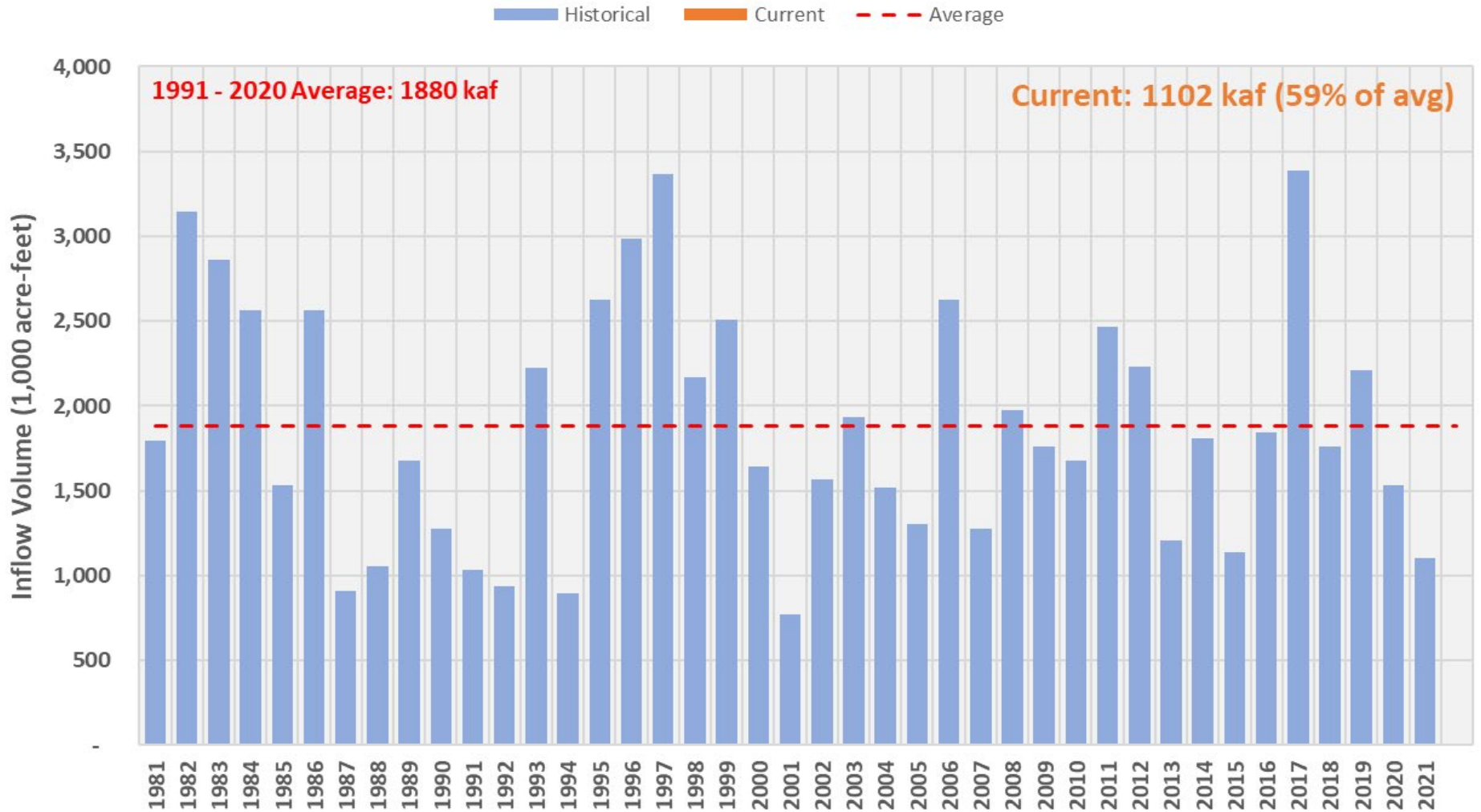
Annual Peak Flows: Ranges
from 3560 cfs to 29,200 cfs

2020: 12,430 cfs

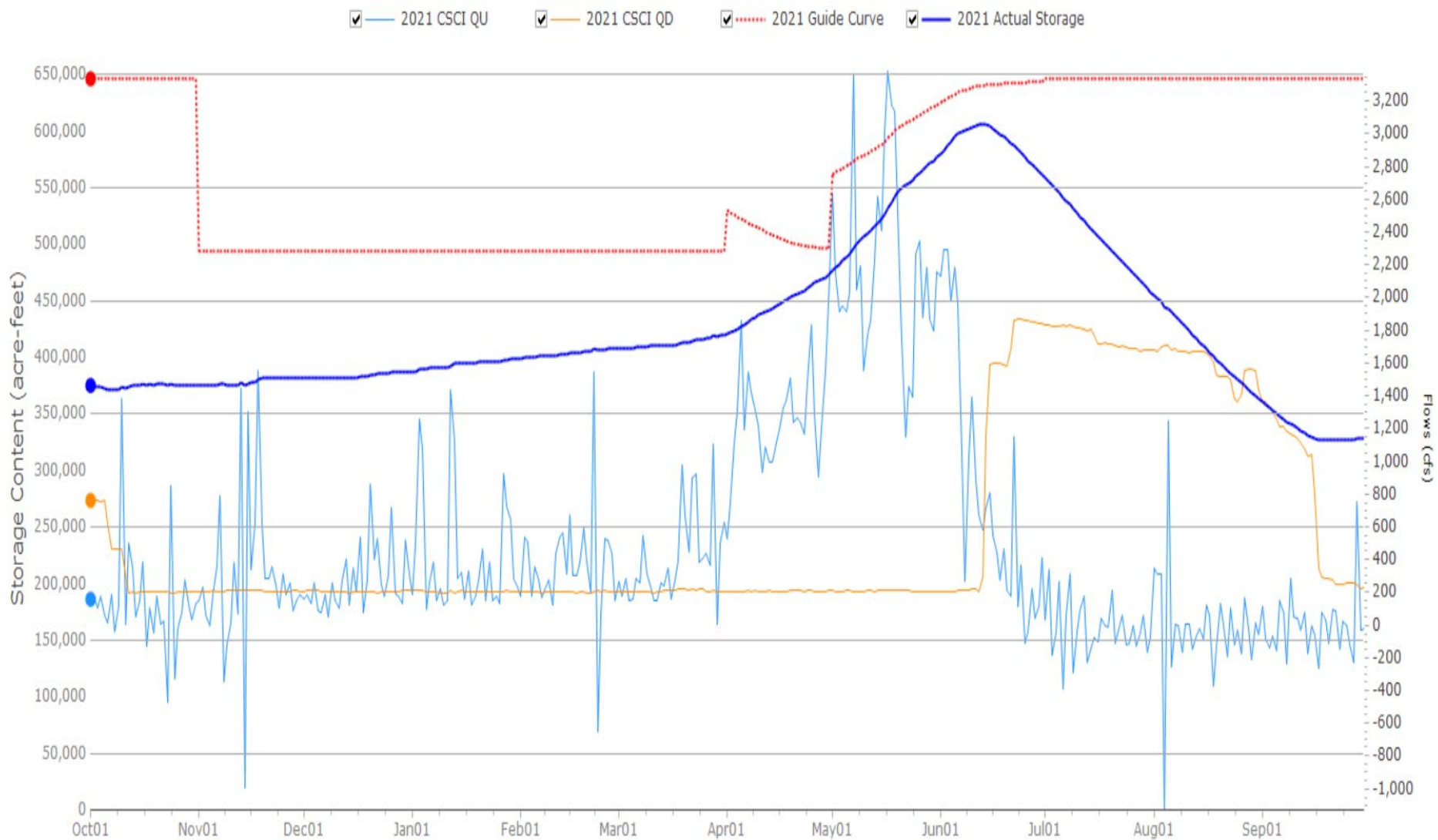
2021: 8,336 cfs



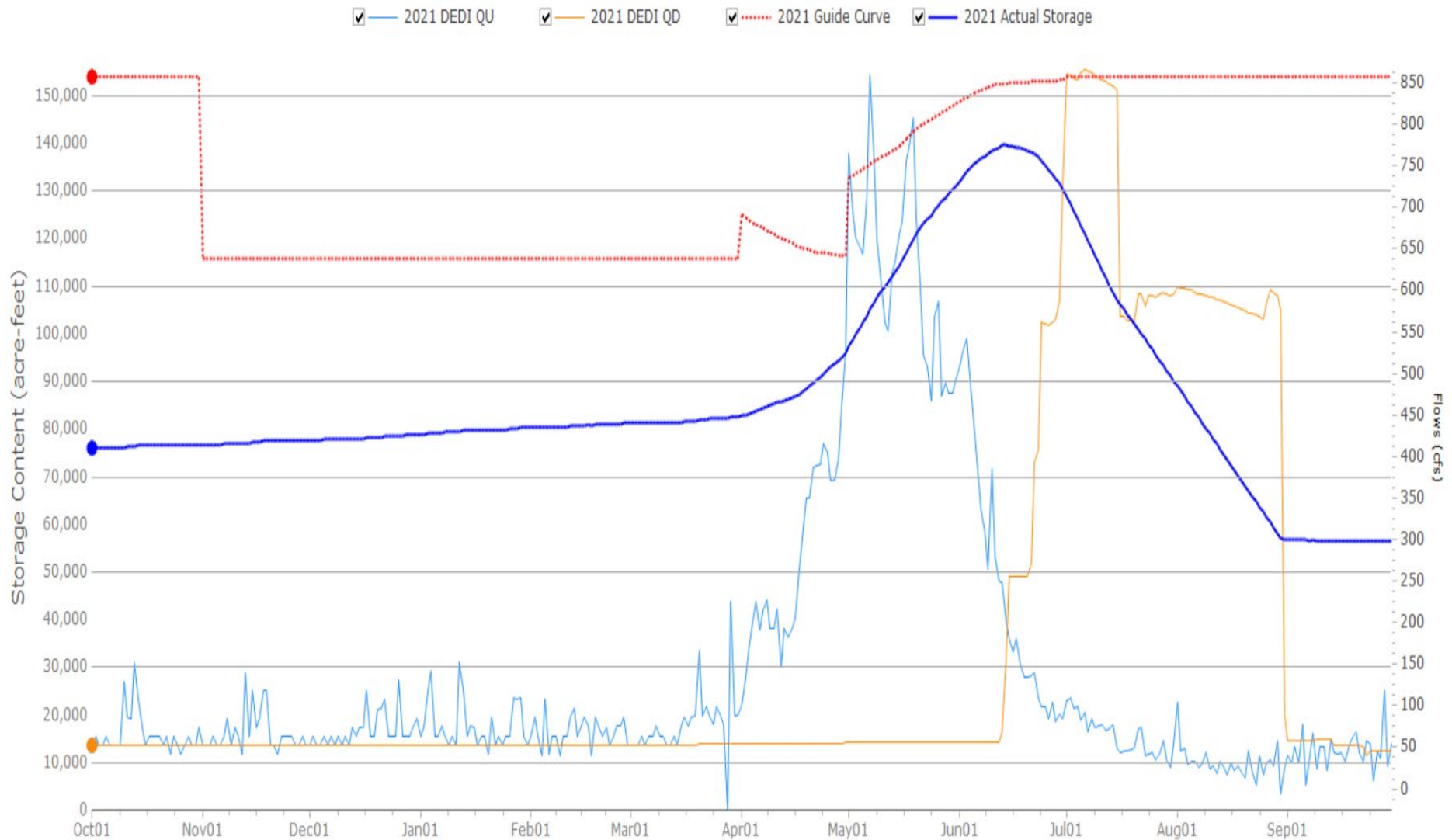
Payette System Inflows - Jan 1 to Jul 31



CSC - Cascade



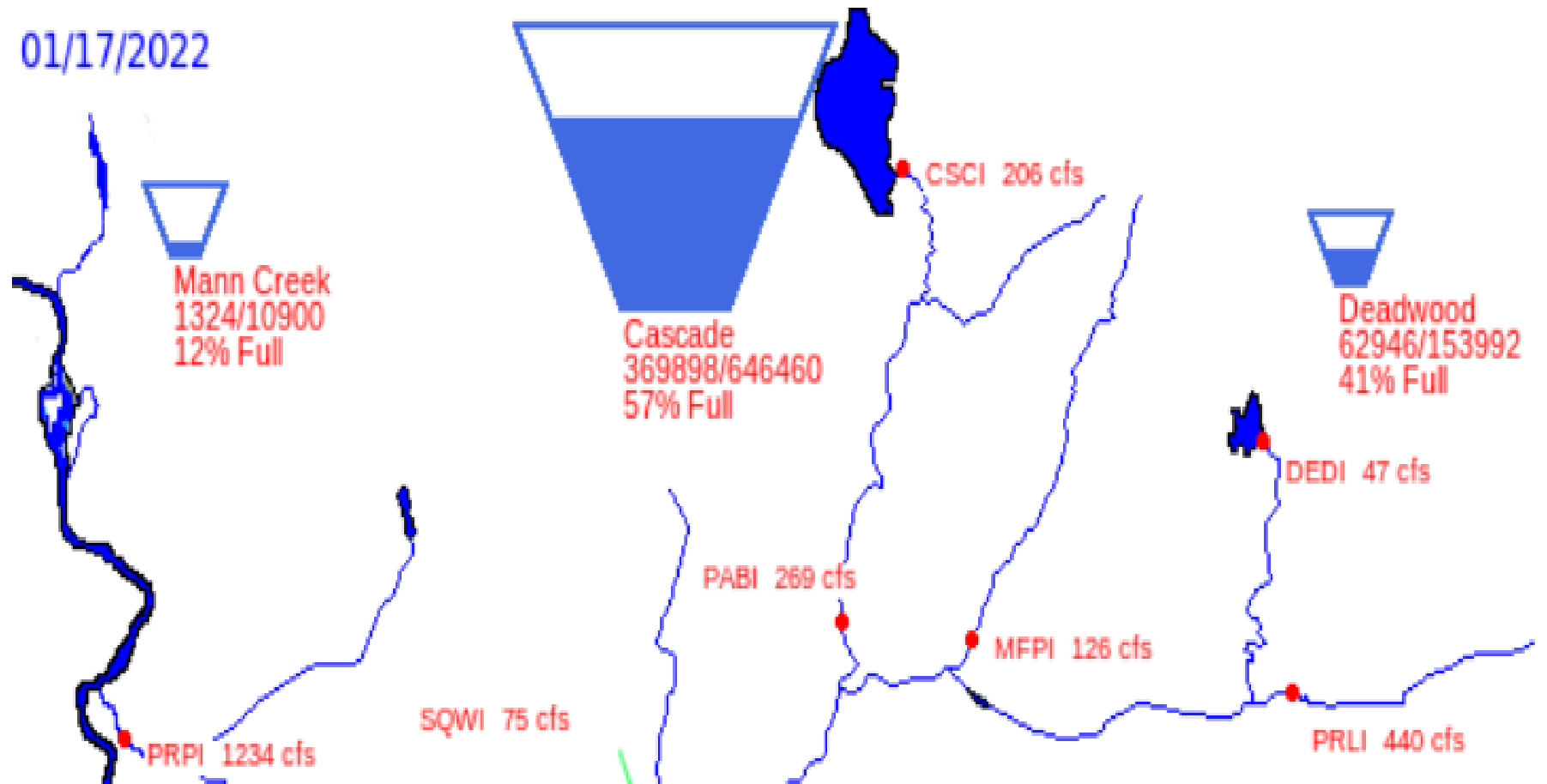
DED - Deadwood



WY2022 Current Conditions



01/17/2022



Payette River system (Cascade, Deadwood) is at 54 % of capacity.

Total space available: 367608 AF

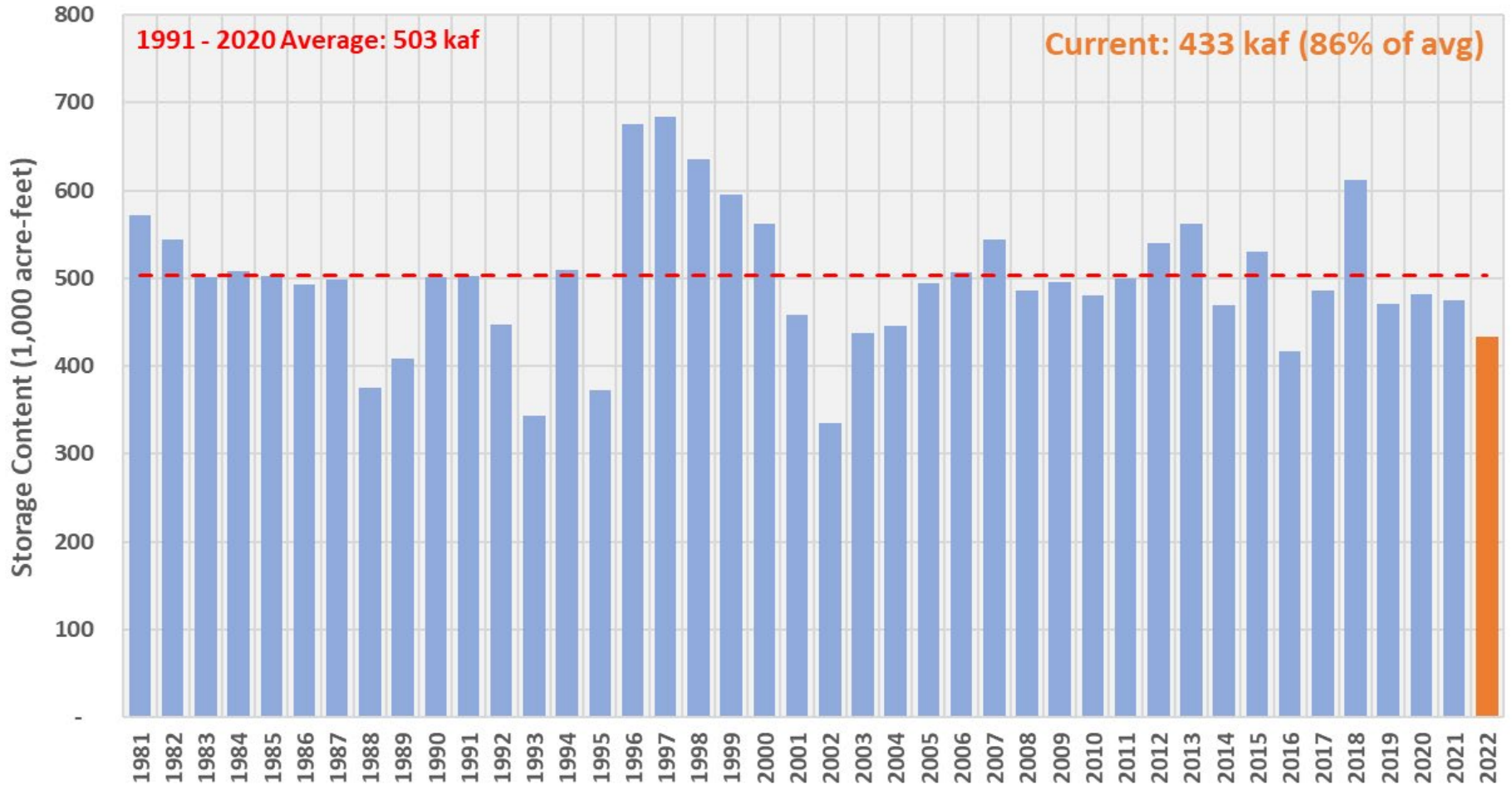
Total storage capacity: 800452 AF

Natural Flow: 954 CFS

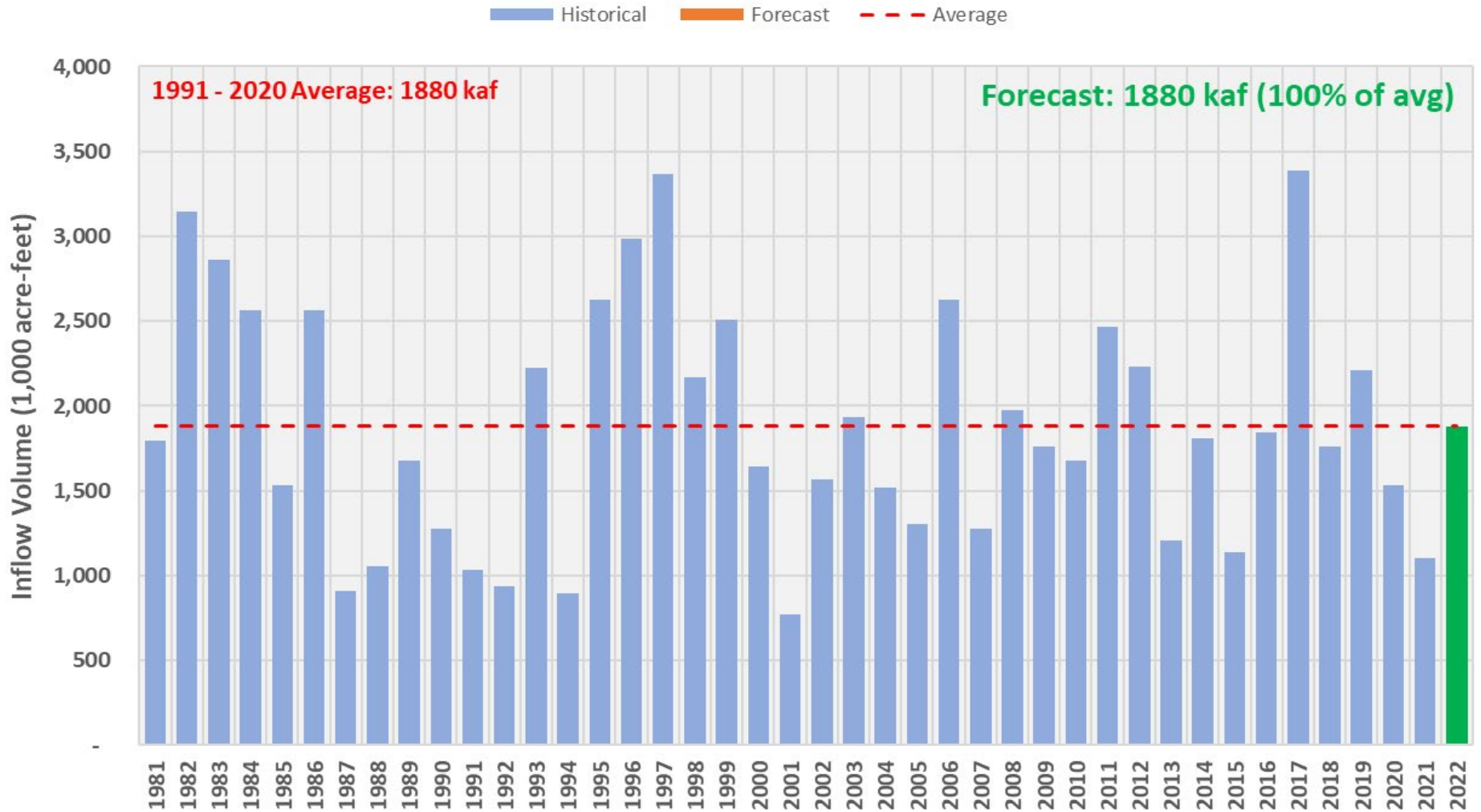


Payette System Storage Content - Jan 17, 2022

Historical Current Average

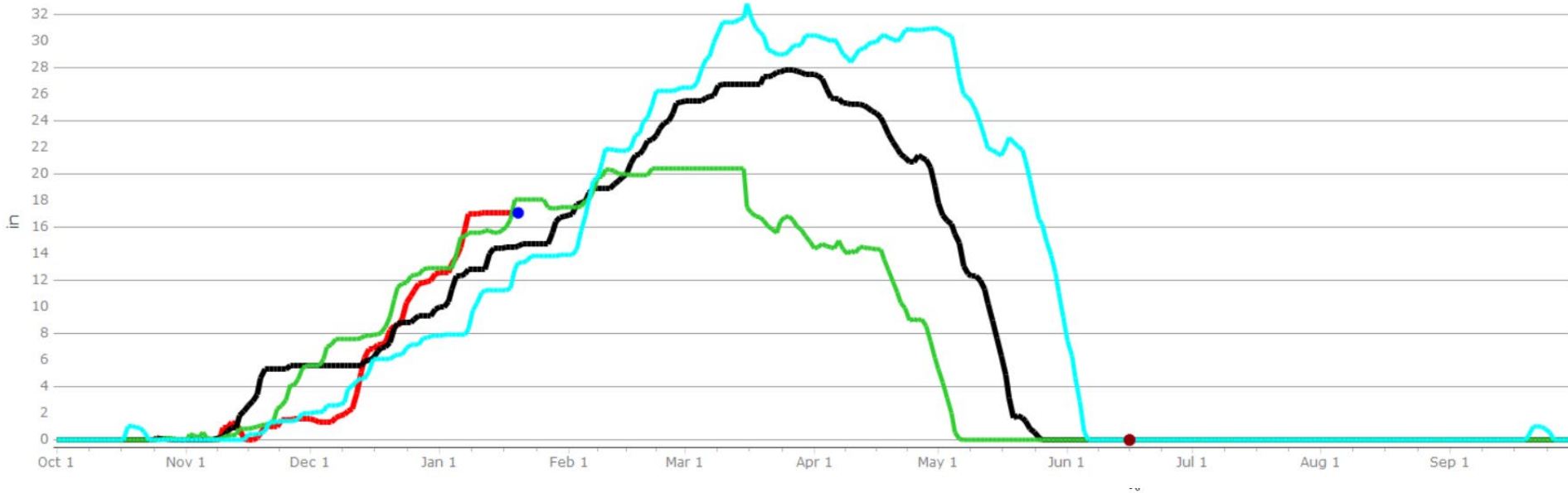


Payette System Inflows - Jan 1 to Jul 31



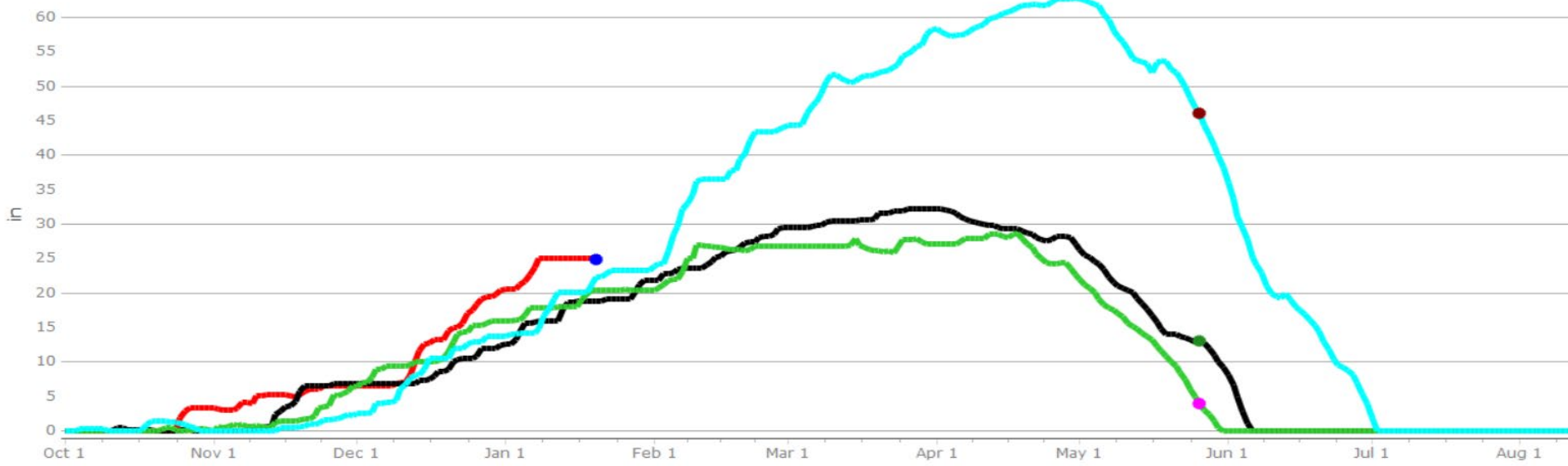
SECESH SUMMIT Elevation:6520.000

2022 2021 2015 2017



DEADWOOD SUMMIT Elevation:6860.000

2022 2021 2015 2017



Owyhee Reservoir Basin Characteristics

Watershed Area: 10,900 sq.
mi.

Watershed Elevation Range:
2,420 ft to 10,400 ft, mean of
5,160 ft

Annual Peak Flows: Ranges
from 780 cfs to 46,560 cfs

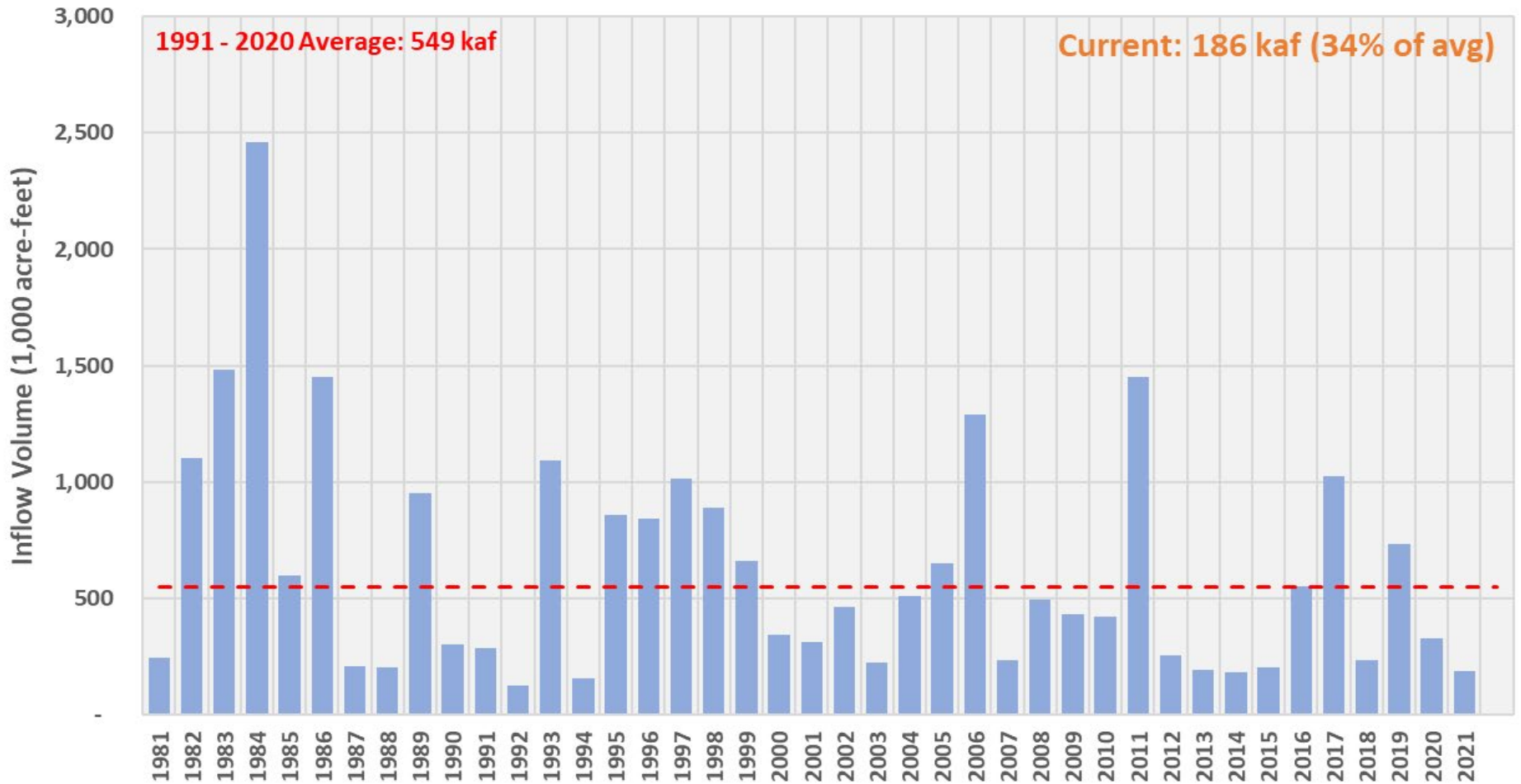
2020: 2,364 cfs

2021: 2,598 cfs

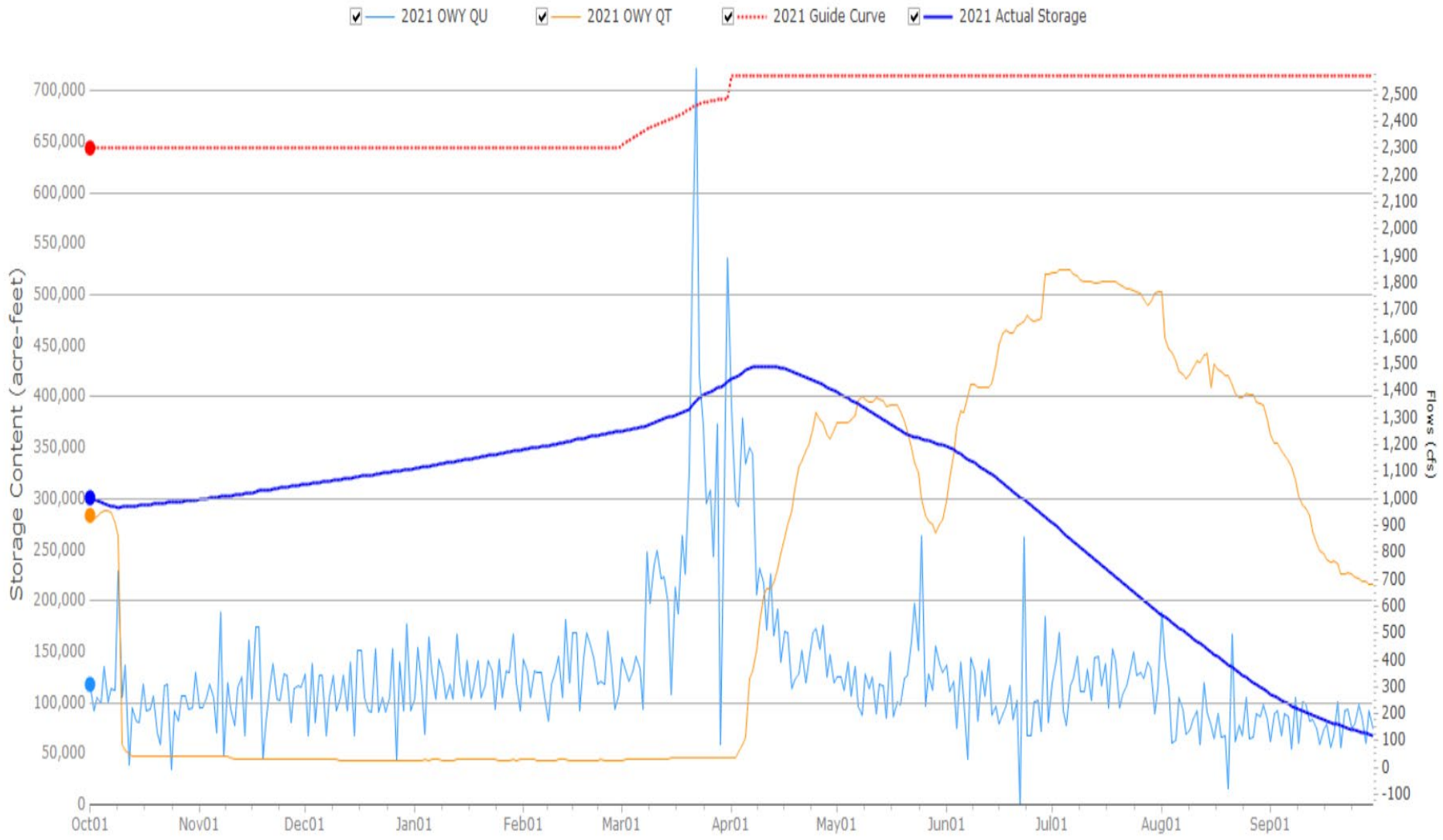


Owyhee Dam Inflows - Jan 1 to Jul 31

Historical Current Average



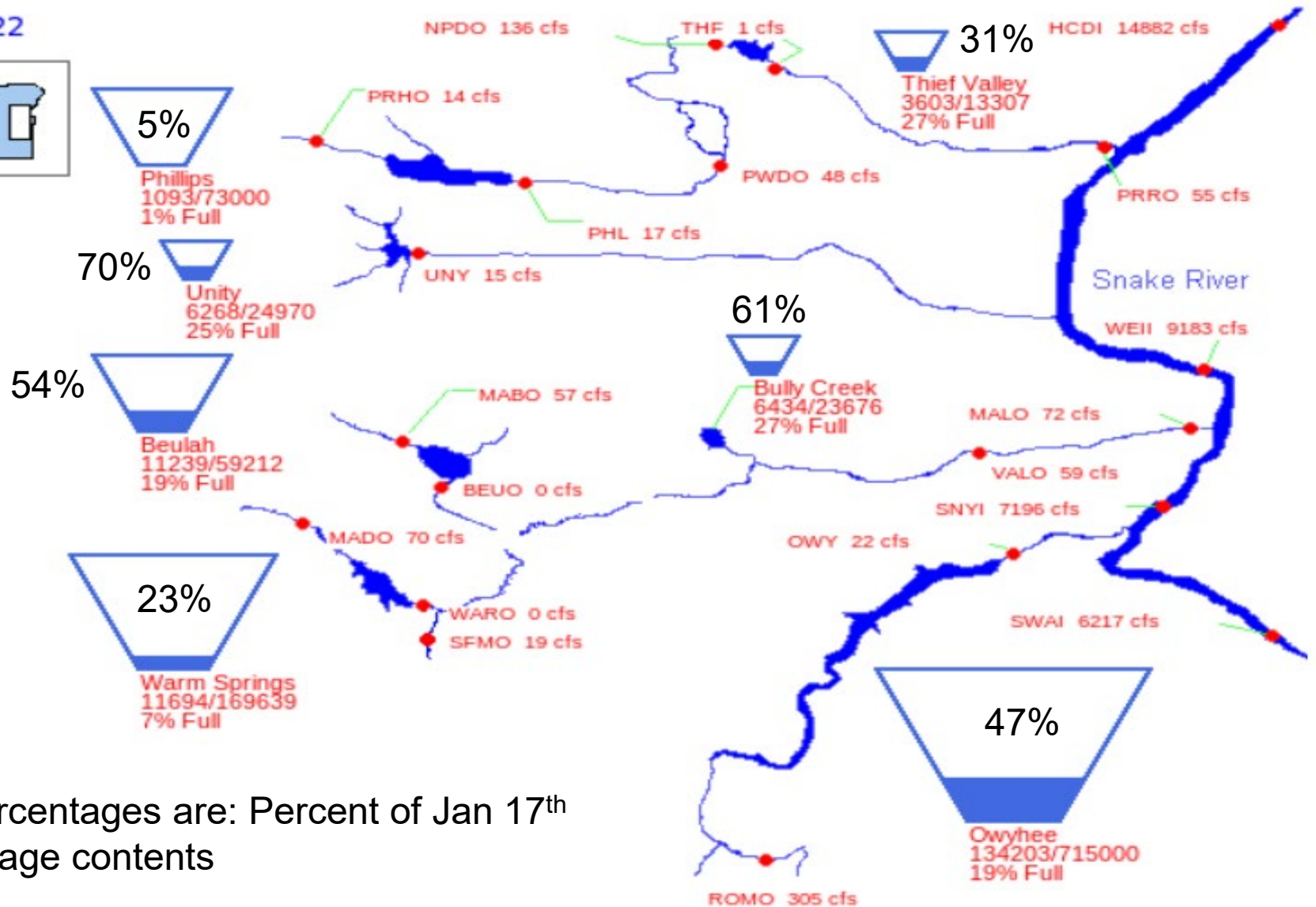
OWY - Owyhee



WY2022 Current Conditions



01/17/2022

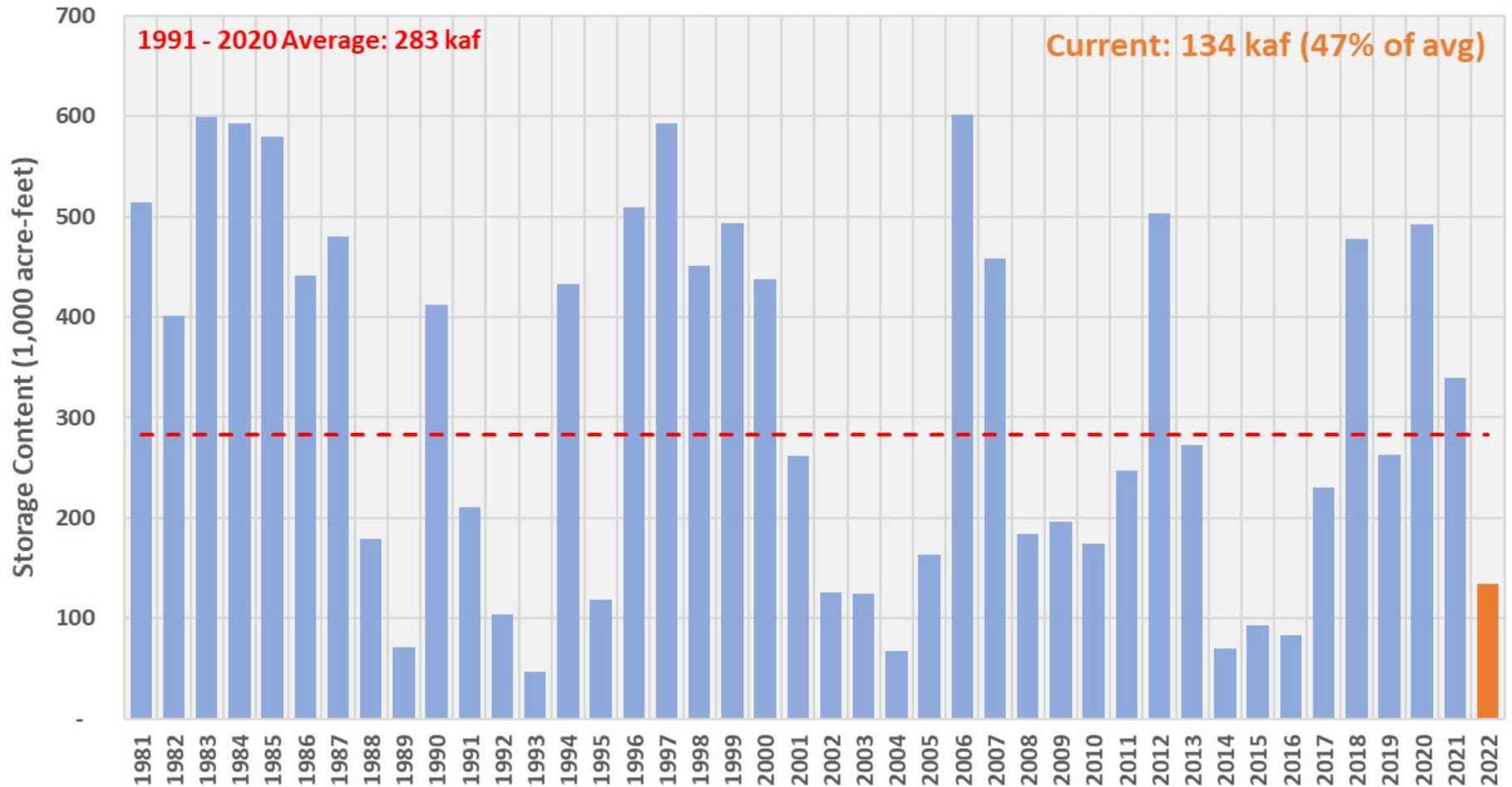


*Percentages are: Percent of Jan 17th storage contents

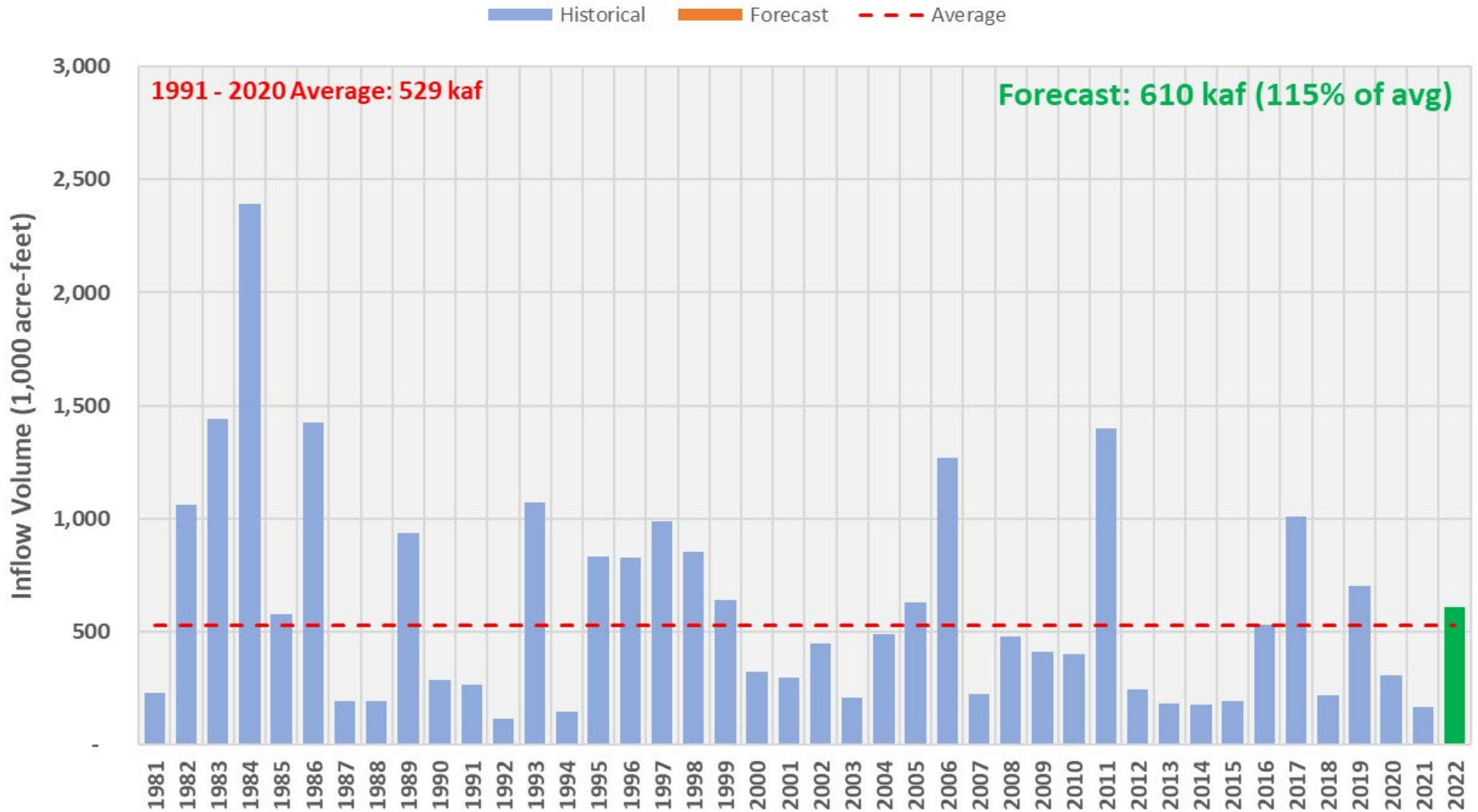


Owyhee Storage Content - Jan 17, 2022

Historical Current Average



Owyhee Dam Inflows - Jan 1 to Jun 30





Ryan Hedrick
Middle Snake Field Office
Water Operations Lead
208-383-2281

