

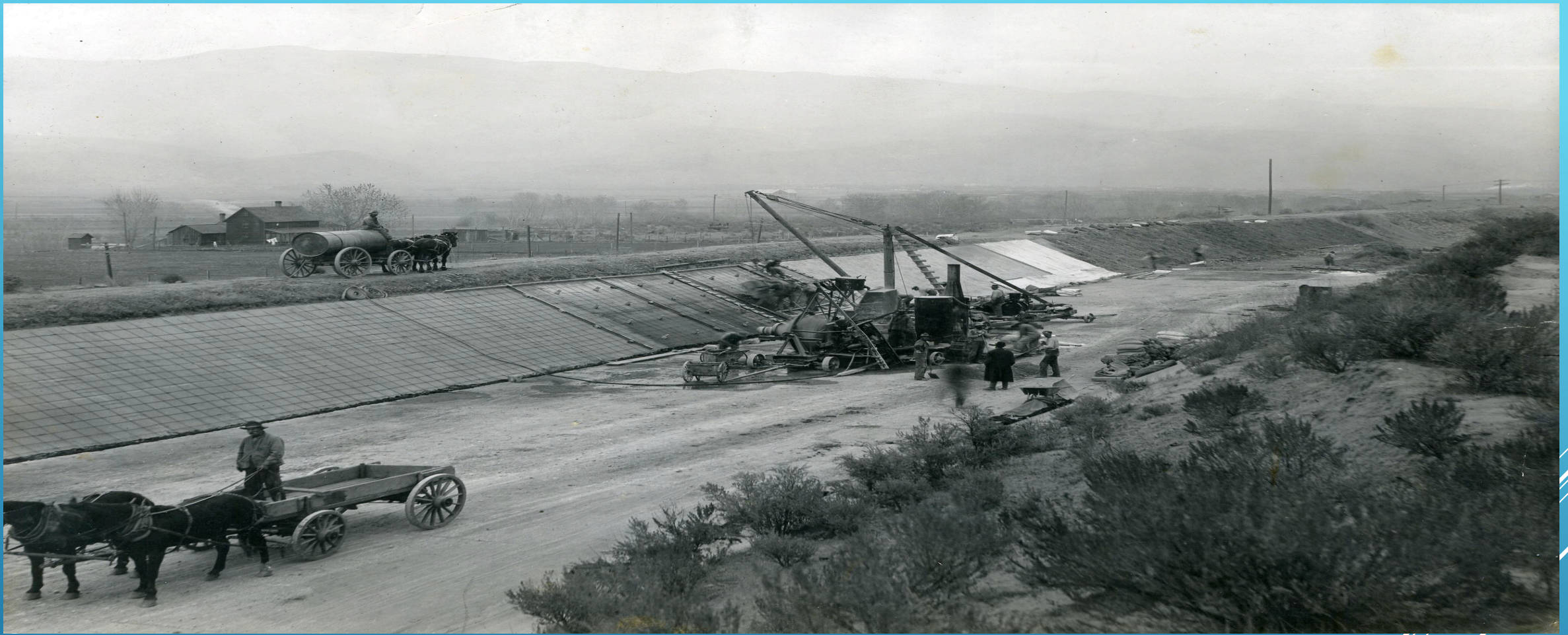


BOISE PROJECT BOARD OF CONTROL

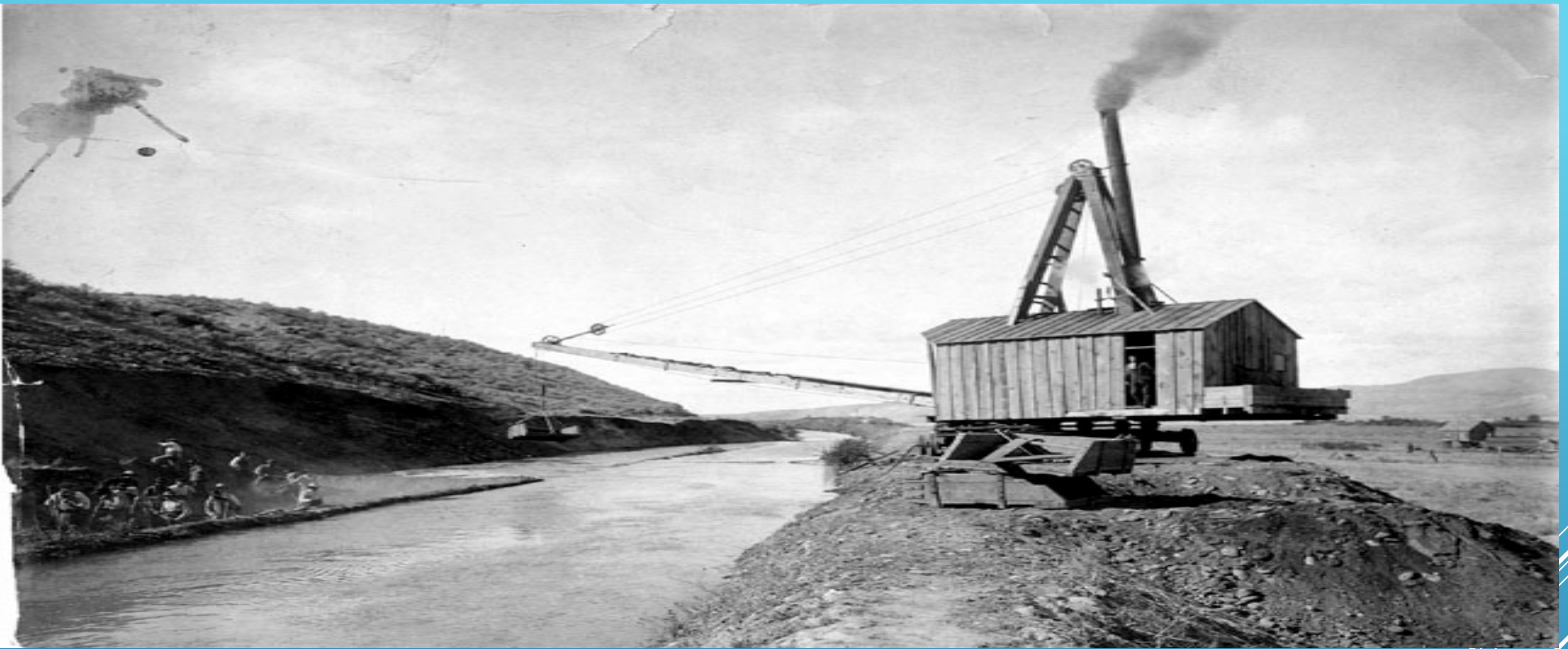


Lining of the New York Canal

IDAHO WATER USERS FEB. 4, 2021



WHERE WE STARTED



P4-100-2620 Revolving derrick for enlarging New York canal.
Arrowrock Division, Boise Project, ID. USBR photo by F.C. Horn. Oct 3, 1906.

ENLARGING THE NEW YORK CANAL IN 1906



Gate at end of New York Canal

NEW YORK CANAL AT LAKE LOWELL



LAYING STEEL MATS AND POURING CONCRETE



SCREEDING WITH EXCAVATOR AND FINISHING BY HAND



TEARING OUT EXISTING CONCRETE



PREPPING CANAL AND APPLYING HUESKER LINER



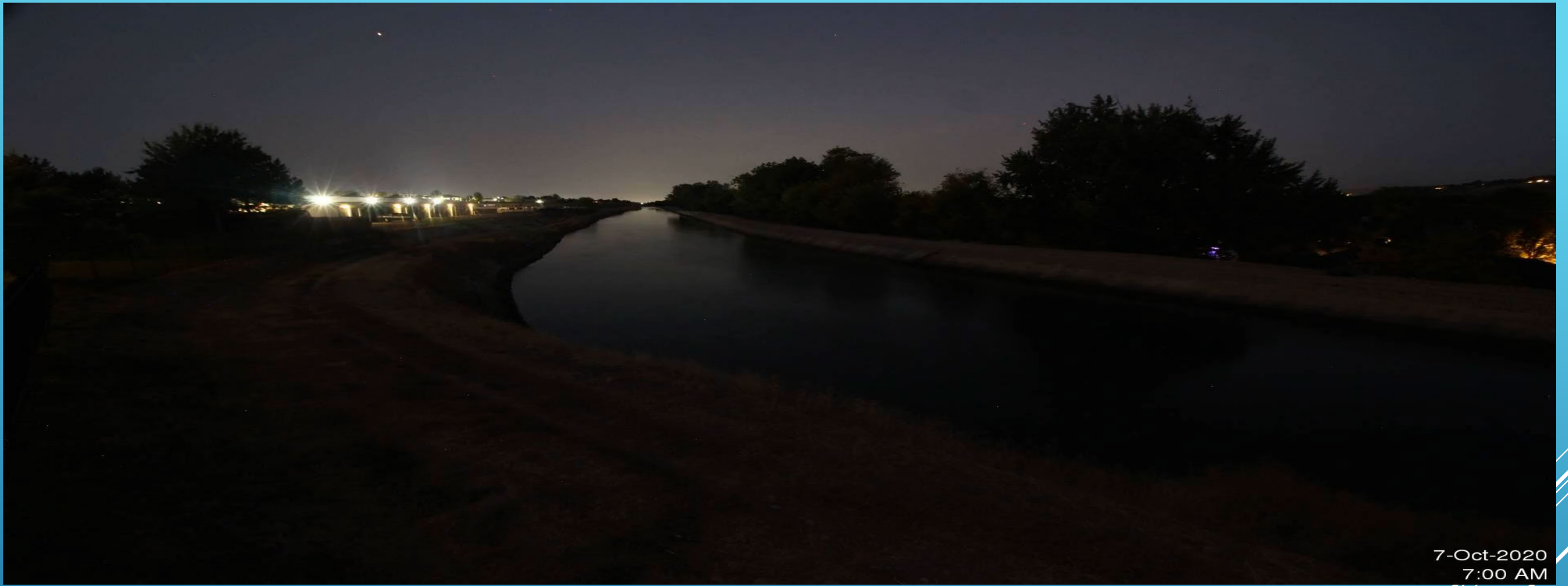
INSTALLED AND READY FOR CONCRETE



POWER SCREED HAS IMPROVED THE PROCESS

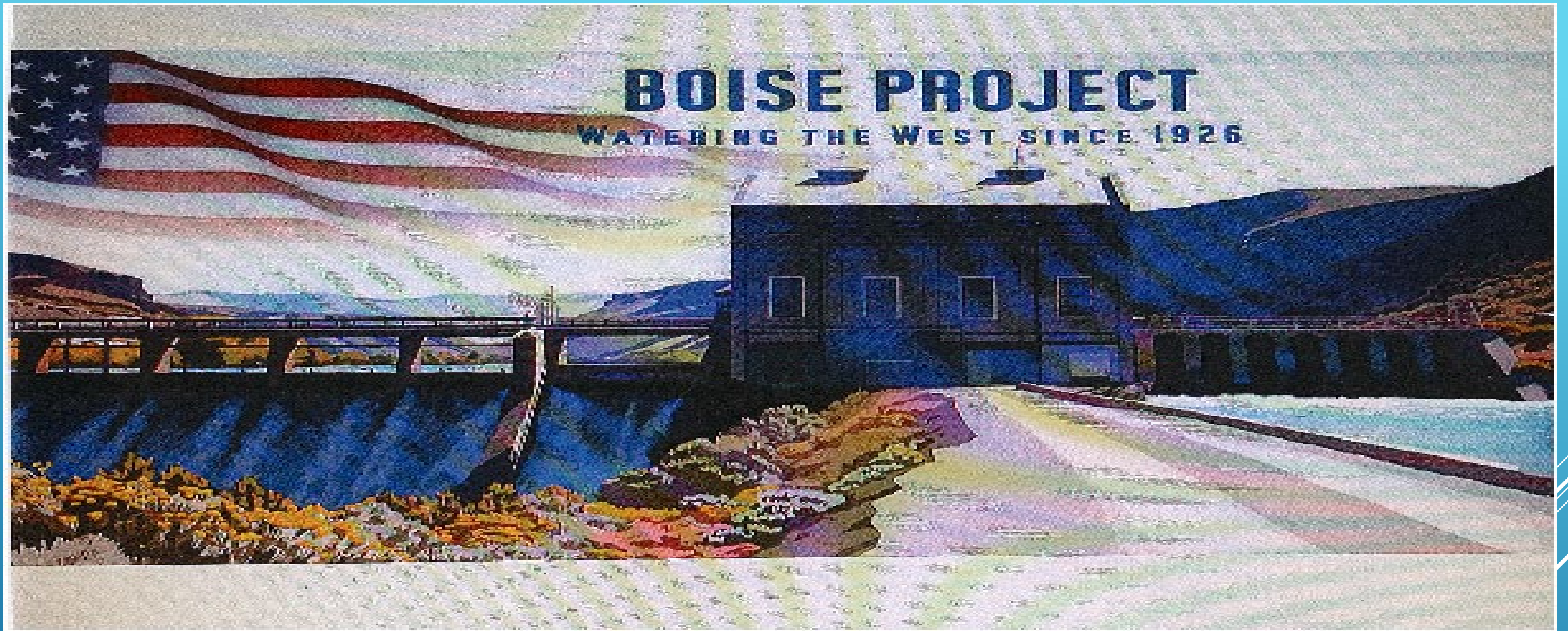


FINISHED AND READY FOR WATER SEASON



7-Oct-2020
7:00 AM

2020 NEW YORK CANAL LINING START TO FINISH



THANK YOU!
QUESTIONS.....