

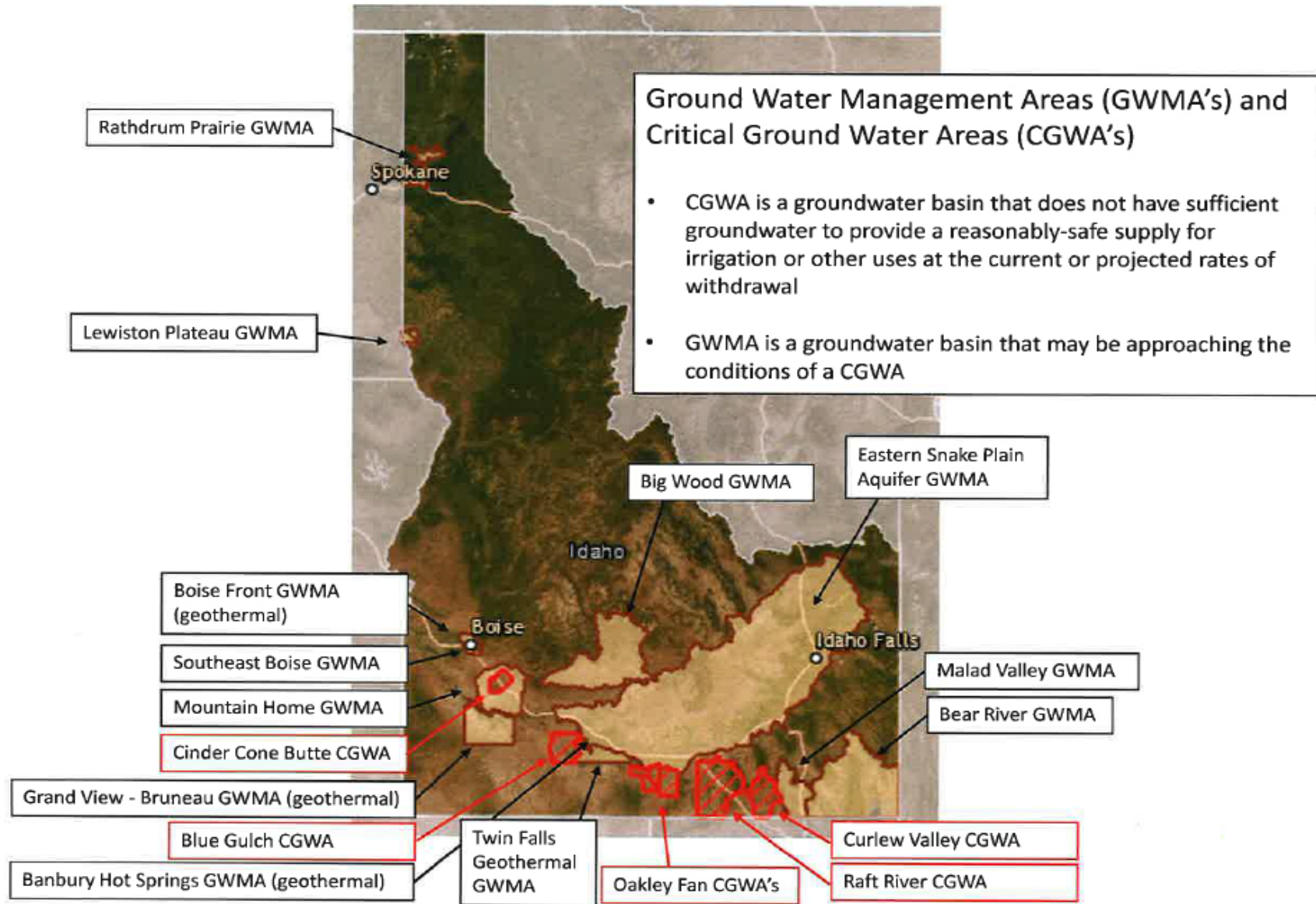


Water Board Response to Ground Water Conditions

IWUA Annual Convention

Albert P. Barker

January 21, 2020





Other Aquifers of Concern

- Treasure Valley Aquifer System
 - ✓ Rapid population increase
 - ✓ Parts have been designated as a GWMA
- Palouse Basin
 - ✓ Moscow and University of Idaho (and Pullman & WSU)
 - ✓ Limited recharge and continuing ground water declines even with aggressive conservation
- Big Lost
 - ✓ Tributary basin to ESPA



Water Board Actions

- The following Water Board actions are being done with the assistance of IDWR staff
- However, these actions are not regulatory or administrative actions that the IDWR Director may undertake under GWMA or CGWA designations
- The Board is grateful for the work of IDWR staff in working on these critical water supply problems
- The Board is also grateful for the assistance and cooperation provided by water users and other local interests



Water Board Actions

- Eastern Snake Plain Aquifer
 - ✓ ESPA CAMP actions: Recharge, demand reduction by GW users, conversions by GW users, Cooperative Cloud Seeding Program, enhanced GW monitoring
 - ✓ Will be discussed later this afternoon
- Treasure Valley Aquifer System
 - ✓ Future water need studies
 - ✓ Ground Water Model development & enhanced ground water monitoring
 - ✓ Cooperative Cloud Seeding program
 - ✓ Pursuing new surface water storage



- Palouse Basin
 - ✓ Working with Palouse Basin Aquifer Committee to develop long-term water supply options
- Lewiston Plateau
 - ✓ Installed enhanced monitoring network
 - ✓ Undertook study, in partnership with local interests, to determine sustainability of deep regional aquifer as future water supply source
- Big Lost
 - ✓ Undertaking hydrogeologic investigation in partnership with USGS with DOE funds
- Raft River Basin
 - ✓ Undertaking hydrogeologic investigation in partnership with Idaho Geological Survey with DOE funds



- Wood River
 - ✓ Developed ground water model in partnership with USGS and local interests
 - ✓ Enhanced monitoring
 - ✓ Cooperative Cloud Seeding Program
- Mountain Home and Cinder Cone Butte
 - ✓ Partnered with Elmore County on a long-term water supply options study
 - ✓ Partnered with Elmore County on an aquifer recharge site
 - ✓ Working with U.S. Air Force to develop a sustainable water supply for the Mountain Home Air Force Base



Questions?

